

MLKL (Phospho Ser358) (6F8) Mouse mAb

CatalogNo: YP1884

Key Features

Host Species

- Mouse

Reactivity

- Human

Applications

- IF,IHC

MW

- 54kD (Observed)

Storage

Storage* -15°C to -25°C/1 year (Do not lower than -25°C)

Formulation Liquid in PBS containing 50% glycerol, 0.5% BSA and 0.02% sodium azide.

Recommended Dilution Ratios

IF 1:50-200

IHC 1:100-200

Basic Information

Clonality Monoclonal

Clone Number 6F8

Immunogen Information

Immunogen Synthetic Peptide of phospho-MLKL (S358)

Specificity phospho-MLKL (S358) protein detects endogenous levels of MLKL

Target Information

Gene name MLKL

Protein Name MLKL

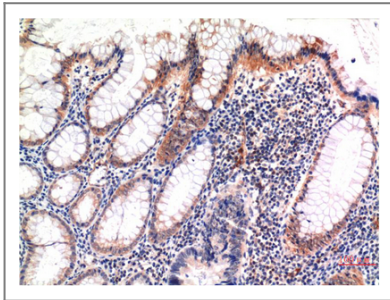
Organism	Gene ID	UniProt ID
Human	197259 ;	Q8NB16 ;
Mouse		Q9D2Y4 ;

Cellular Localization Cytoplasm . Cell membrane . Nucleus . Localizes to the cytoplasm and translocates to the plasma membrane on necroptosis induction (PubMed:24316671) . Localizes to the nucleus in response to orthomyxoviruses infection (By similarity) . .

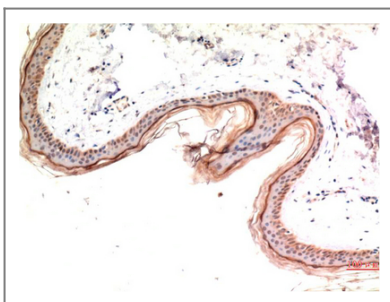
Tissue specificity Chondrocyte ,Leukocyte ,Lymph node ,

Function Domain:The protein kinase domain is predicted to be catalytically inactive. ,similarity:Belongs to the protein kinase superfamily. ,similarity:Contains 1 protein kinase domain. ,

Validation Data



Immunohistochemical analysis of paraffin-embedded Human Colon Carcinoma Tissue using Phospho-MLKL S358 Mouse mAb diluted at 1:200.



Immunohistochemical analysis of paraffin-embedded Human Skin Tissue using Phospho-MLKL S358 Mouse mAb diluted at 1:200.

Contact information

Orders: order.cn@immunoway.com
Support: support.cn@immunoway.com
Telephone: 400-8787-807(China)
Website: <http://www.immunoway.com.cn>
Address: 2200 Ringwood Ave San Jose, CA 95131 USA



Please scan the QR code to access additional product information:
MLKL (Phospho Ser358) (6F8) Mouse mAb

