

## CaMKII $\beta$ / $\gamma$ / $\delta$ (Phospho Thr287) (4H2) Mouse mAb

CatalogNo: YP1880

### Key Features

#### Host Species

- Mouse

#### Reactivity

- Human, Mouse, Rat

#### Applications

- IHC, IF

#### MW

- 50kD (Observed)

### Storage

**Storage\*** -15°C to -25°C/1 year (Do not lower than -25°C)

**Formulation** Liquid in PBS containing 50% glycerol, 0.5% BSA and 0.02% sodium azide.

### Recommended Dilution Ratios

IHC 1:100-200

IF 1:50-200

### Basic Information

**Clonality** Monoclonal

**Clone Number** 4H2

### Immunogen Information

**Immunogen** Synthetic Peptide of CaMKII $\beta$ / $\gamma$ / $\delta$  (Phospho Thr287)

**Specificity** CaMKII $\beta$ / $\gamma$ / $\delta$  (Phospho Thr287) protein detects endogenous levels of CaMKII $\beta$ / $\gamma$ / $\delta$  (Phospho Thr287)

### Target Information

**Gene name** CAMK2B

**Protein Name** Calcium/calmodulin-dependent protein kinase type II subunit beta

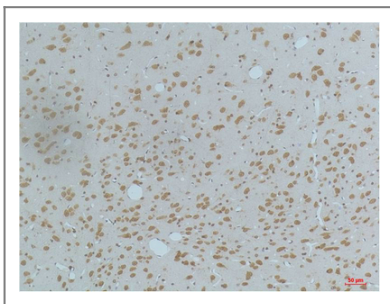
Organism	Gene ID	UniProt ID
Human	<a href="#">816</a> ; <a href="#">817</a> ; <a href="#">818</a> ;	<a href="#">Q13554</a> ; <a href="#">Q13555</a> ; <a href="#">Q13557</a> ;
Mouse	<a href="#">12323</a> ; <a href="#">12325</a> ; <a href="#">108058</a> ;	
Rat	<a href="#">24245</a> ; <a href="#">171140</a> ; <a href="#">24246</a> ;	<a href="#">P08413</a> ; <a href="#">P11730</a> ; <a href="#">P15791</a> ;

**Cellular Localization** Cytoplasm, cytoskeleton . Cytoplasm, cytoskeleton, microtubule organizing center, centrosome . Sarcoplasmic reticulum membrane ; Peripheral membrane protein ; Cytoplasmic side . Cell junction, synapse . In slow-twitch muscle, evenly distributed between longitudinal SR and junctional SR.

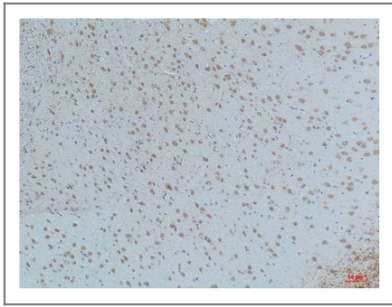
**Tissue specificity** Widely expressed. Expressed in adult and fetal brain. Expression is slightly lower in fetal brain. Expressed in skeletal muscle.

**Function** Alternative products:The variable region of the CAMK2B protein is encoded by at least 7 exons (V1 to V7). Alternative splicing within this region gives rise to CAMK2B isoforms,Catalytic activity:ATP + a protein = ADP + a phosphoprotein.,enzyme regulation:Autophosphorylation of CAMK2 plays an important role in the regulation of the kinase activity.,Function:CaM-kinase II (CAMK2) is a prominent kinase in the central nervous system that may function in long-term potentiation and neurotransmitter release. Member of the NMDAR signaling complex in excitatory synapses, it may regulate NMDAR-dependent potentiation of the AMPAR and synaptic plasticity.,similarity:Belongs to the protein kinase superfamily.,similarity:Belongs to the protein kinase superfamily. CAMK Ser/Thr protein kinase family. CaMK subfamily.,similarity:Contains 1 protein kinase domain.,subunit:CAMK2 is composed of four different chains: alpha, beta, gamma, and delta. The different isoforms assemble into homo- or heteromultimeric holoenzymes composed of 8 to 12 subunits. Interacts with SYNGAP1 and CAMK2N2 (By similarity). Interacts with MPDZ.,tissue specificity:Widely expressed. Expressed in adult and fetal brain. Expression is slightly lower in fetal brain.,

## Validation Data



Immunohistochemical analysis of paraffin-embedded Rat Brain Tissue using CaMKII $\beta$ /  $\gamma$  / $\delta$  (Phospho Thr287) (mAb diluted at 1:200).



Immunohistochemical analysis of paraffin-embedded Mouse Brain Tissue using CaMKII $\beta/\gamma/\delta$  (Phospho Thr287) Mouse mAb diluted at 1:200.

## | Contact information

Orders: [order.cn@immunoway.com](mailto:order.cn@immunoway.com)  
Support: [support.cn@immunoway.com](mailto:support.cn@immunoway.com)  
Telephone: 400-8787-807(China)  
Website: <http://www.immunoway.com.cn>  
Address: 2200 Ringwood Ave San Jose, CA 95131 USA



Please scan the QR code to access additional product information:  
**CaMKII $\beta/\gamma/\delta$**   
**(Phospho Thr287)**  
**(4H2) Mouse mAb**

---

For Research Use Only. Not for Use in Diagnostic Procedures.

[Antibody](#) | [ELISA Kits](#) | [Protein](#) | [Reagents](#)