

FGFR4 (Phospho Tyr754) Rabbit pAb

CatalogNo: YP1875 **Orthogonal Validated** 

Key Features

Host Species

- Rabbit

Reactivity

- Human, Mouse, Rat

Applications

- IHC, WB

MW

- 90kD (Observed)

Storage

Storage* -15°C to -25°C/1 year (Do not lower than -25°C)

Formulation Liquid in PBS containing 50% glycerol, and 0.02% sodium azide.

Recommended Dilution Ratios

WB 1:500-2000

IHC 1:50-200

Basic Information

Clonality Polyclonal

Immunogen Information

Immunogen Synthesized peptide derived from human FGFR4 (Phospho Tyr754)

Specificity This antibody detects endogenous levels of FGFR4 (Phospho Tyr754) Rabbit pAb at Human, Mouse, Rat. The name of modified sites may be influenced by many factors, such as species (the modified site was not originally found in human samples) and the change of protein sequence (the previous protein sequence is incomplete, and the protein sequence may be prolonged with the development of protein sequencing technology). When naming, we will use the "numbers" in historical reference to keep the sites consistent with the reports. The antibody binds to the following modification sequence (lowercase letters are modification sites): EEyLD

| Target Information

Gene name FGFR4 JTK2 TKF

Protein Name Fibroblast growth factor receptor 4 (FGFR-4) (CD antigen CD334)

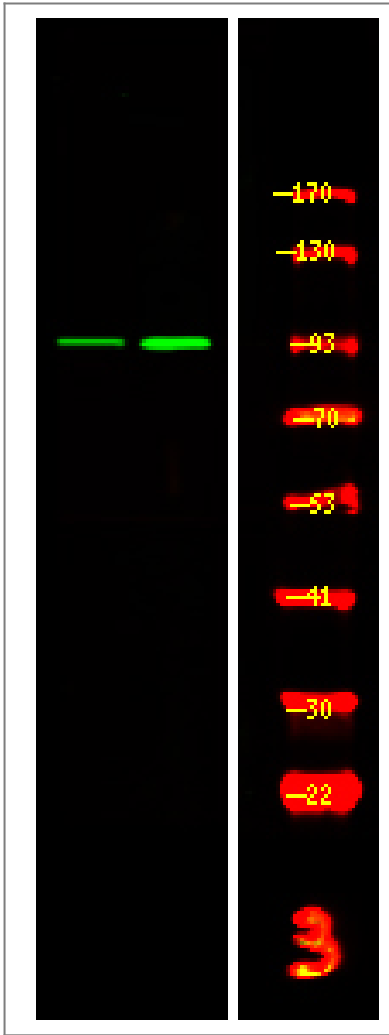
Organism	Gene ID	UniProt ID
Human	2264;	P22455;
Mouse	14186;	Q03142;
Rat	25114;	Q498D6;

Cellular Localization Cell membrane; Single-pass type I membrane protein. Endosome. Endoplasmic reticulum. Internalized from the cell membrane to recycling endosomes, and from there back to the cell membrane.; [Isoform 2]: Secreted.; [Isoform 3]: Cytoplasm .

Tissue specificity Expressed in gastrointestinal epithelial cells, pancreas, and gastric and pancreatic cancer cell lines.

Function Catalytic activity:ATP + a [protein]-L-tyrosine = ADP + a [protein]-L-tyrosine phosphate.,Function:Receptor for acidic fibroblast growth factor. Does not bind to basic fibroblast growth factor. Binds FGF19.,PTM:Glycosylated (By similarity). Phosphorylated on tyrosine residue (By similarity). Phosphorylation requires the presence of a functional (phosphorylated) FGFR1 and not necessarily by means of FGFR heterodimerization.,similarity:Belongs to the protein kinase superfamily. Tyr protein kinase family.,similarity:Belongs to the protein kinase superfamily. Tyr protein kinase family. Fibroblast growth factor receptor subfamily.,similarity:Contains 1 protein kinase domain.,similarity:Contains 3 Ig-like C2-type (immunoglobulin-like) domains.,subcellular location:Isoform 2 may be secreted.,subunit:Interacts with KLB.,tissue specificity:Expressed in gastrointestinal epithelial cells, pancreas, and gastric and pancreatic cancer cell lines.,

| Validation Data



Western Blot analysis of THP-1 cell, 2 Serum-free treated ,using primary antibody at 1:1000 dilution. Secondary antibody(catalog#:RS23920) was diluted at 1:10000

Contact information

Orders: order.cn@immunoway.com
Support: support.cn@immunoway.com
Telephone: 400-8787-807(China)
Website: <http://www.immunoway.com.cn>
Address: 2200 Ringwood Ave San Jose, CA 95131 USA



Please scan the QR code to access additional product information:
FGFR4 (Phospho Tyr754) Rabbit pAb

For Research Use Only. Not for Use in Diagnostic Procedures.

[Antibody](#) | [ELISA Kits](#) | [Protein](#) | [Reagents](#)