

## Beclin-1 (Phospho Ser93/96) Rabbit pAb

CatalogNo: YP1864 **Orthogonal Validated** 

### Key Features

#### Host Species

- Rabbit

#### Reactivity

- Human, Mouse, Rat

#### Applications

- IHC, WB

#### MW

- 55kD (Observed)

### Storage

**Storage\*** -15°C to -25°C/1 year (Do not lower than -25°C)

**Formulation** Liquid in PBS containing 50% glycerol, and 0.02% sodium azide.

### Recommended Dilution Ratios

WB 1:500-2000

IHC 1:50-200

### Basic Information

**Clonality** Polyclonal

### Immunogen Information

**Immunogen** Synthesized peptide derived from human Beclin-1 (Phospho Ser93/96)

**Specificity** This antibody detects endogenous levels of Beclin-1 only when dually phosphorylated at Ser93 or Ser96. It can also recognize dually phosphorylated form at both Ser93 and Ser96 and phosphorylated at one sites.

### Target Information

**Gene name** BECN1 GT197

**Protein Name** Beclin-1 (Coiled-coil myosin-like BCL2-interacting protein) (Protein GT197)

Organism	Gene ID	UniProt ID
Human	<a href="#">8678</a> ;	<a href="#">Q14457</a> ;
Mouse	<a href="#">56208</a> ;	<a href="#">O88597</a> ;
Rat	<a href="#">114558</a> ;	<a href="#">Q91XJ1</a> ;

**Cellular Localization**

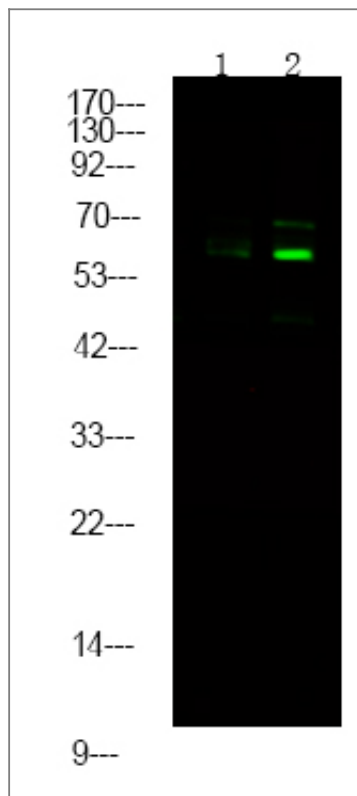
Cytoplasm . Golgi apparatus, trans-Golgi network membrane ; Peripheral membrane protein . Endosome membrane ; Peripheral membrane protein . Endoplasmic reticulum membrane ; Peripheral membrane protein . Mitochondrion membrane ; Peripheral membrane protein . Endosome . Cytoplasmic vesicle, autophagosome . Interaction with ATG14 promotes translocation to autophagosomes. Expressed in dendrites and cell bodies of cerebellar Purkinje cells (By similarity). .; [Beclin-1-C 35 kDa]: Mitochondrion . Nucleus . Cytoplasm .; [Beclin-1-C 37 kDa]: Mitochondrion .

**Tissue specificity** Ubiquitous.

**Function**

Function:Plays a central role in autophagy (By similarity). May play a role in antiviral host defense. Protects against infection by a neurovirulent strain of Sindbis virus.,similarity:Belongs to the beclin family.,subcellular location:Expressed in dendrites and cell bodies of cerebellar Purkinje cells.,subunit:Interacts with GOPC and GRID2. Interacts with AMBRA1. Probably forms a complex with AMBRA1 and PIK3C3 (By similarity). Interacts with BCL2 and BCL2L1.,tissue specificity:Ubiquitous.,

## Validation Data



Western Blot analysis of mouse spleen ,using primary antibody at 1:1000 dilution. Secondary antibody(catalog#:RS23920) was diluted at 1:10000

## Contact information

Orders: [order.cn@immunoway.com](mailto:order.cn@immunoway.com)  
Support: [support.cn@immunoway.com](mailto:support.cn@immunoway.com)  
Telephone: 400-8787-807(China)  
Website: <http://www.immunoway.com.cn>  
Address: 2200 Ringwood Ave San Jose, CA 95131 USA



Please scan the QR code to access additional product information:  
**Beclin-1 (Phospho Ser93/96) Rabbit pAb**

---

For Research Use Only. Not for Use in Diagnostic Procedures.

[Antibody](#) | [ELISA Kits](#) | [Protein](#) | [Reagents](#)