

## p21 Cip1 (Phospho Ser129) Rabbit pAb

CatalogNo: YP1849 **Orthogonal Validated** 

### Key Features

#### Host Species

- Rabbit

#### Reactivity

- Human, Mouse

#### Applications

- IHC, WB

#### MW

- 21kD (Observed)

### Storage

**Storage\*** -15°C to -25°C/1 year (Do not lower than -25°C)

**Formulation** Liquid in PBS containing 50% glycerol, and 0.02% sodium azide.

### Recommended Dilution Ratios

WB 1:500-2000

IHC 1:50-200

### Basic Information

**Clonality** Polyclonal

### Immunogen Information

**Immunogen** Synthesized peptide derived from human p21 Cip1 (Phospho Ser129)

**Specificity** This antibody detects endogenous levels of p21 Cip1 (Phospho Ser129) Rabbit pAb at Human, Mouse. The name of modified sites may be influenced by many factors, such as species (the modified site was not originally found in human samples) and the change of protein sequence (the previous protein sequence is incomplete, and the protein sequence may be prolonged with the development of protein sequencing technology). When naming, we will use the "numbers" in historical reference to keep the sites consistent with the reports. The antibody binds to the following modification sequence (lowercase letters are modification sites): EGSPG

## Target Information

**Gene name** CDKN1A CAP20 CDKN1 CIP1 MDA6 PIC1 SDI1 WAF1

**Protein Name** Cyclin-dependent kinase inhibitor 1

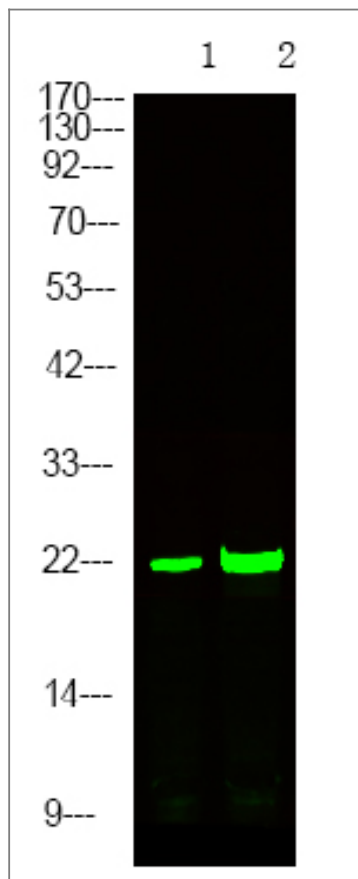
Organism	Gene ID	UniProt ID
Human	<a href="#">1026;</a>	<a href="#">P38936;</a>
Mouse	<a href="#">12575;</a>	<a href="#">P39689;</a>

**Cellular Localization** Cytoplasm . Nucleus .

**Tissue specificity** Expressed in all adult tissues, with 5-fold lower levels observed in the brain.

**Function** Function:May be the important intermediate by which p53 mediates its role as an inhibitor of cellular proliferation in response to DNA damage. Binds to and inhibits cyclin-dependent kinase activity, preventing phosphorylation of critical cyclin-dependent kinase substrates and blocking cell cycle progression.,induction:By p53, mezerein (antileukemic compound) and interferon beta.,PTM:Phosphorylation of Thr-145 by Akt or of Ser-146 by PKC impairs binding to PCNA.,similarity:Belongs to the CDI family.,tissue specificity:Expressed in all adult human tissues, with 5-fold lower levels observed in the brain.,

## Validation Data



Western Blot analysis of 1 HeLa cell, 2 LPS 100ng/mL 30min treated ,using primary antibody at 1:1000 dilution. Secondary antibody(catalog#:RS23920) was diluted at 1:10000

## | Contact information

Orders: order.cn@immunoway.com  
Support: support.cn@immunoway.com  
Telephone: 400-8787-807(China)  
Website: <http://www.immunoway.com.cn>  
Address: 2200 Ringwood Ave San Jose, CA 95131 USA



Please scan the QR code to access additional product information:  
**p21 Cip1 (Phospho Ser129) Rabbit pAb**

---

For Research Use Only. Not for Use in Diagnostic Procedures.

[Antibody](#) | [ELISA Kits](#) | [Protein](#) | [Reagents](#)