

## DAPK1 (Phospho Ser289) Rabbit pAb

CatalogNo: YP1813 **Orthogonal Validated** 

### Key Features

#### Host Species

- Rabbit

#### Reactivity

- Human, Mouse

#### Applications

- IHC, WB

#### MW

- 157kD (Calculated)

### Storage

**Storage\*** -15°C to -25°C/1 year (Do not lower than -25°C)

**Formulation** Liquid in PBS containing 50% glycerol, and 0.02% sodium azide.

### Recommended Dilution Ratios

WB 1:500-2000

IHC 1:50-200

### Basic Information

**Clonality** Polyclonal

### Immunogen Information

**Immunogen** Synthesized peptide derived from human DAPK1 (Phospho Ser289)

**Specificity** This antibody detects endogenous levels of DAPK1 (Phospho Ser289) Rabbit pAb at Human, Mouse

### Target Information

**Gene name** DAPK1 DAPK

**Protein Name** Death-associated protein kinase 1 (DAP kinase 1) (EC 2.7.11.1)

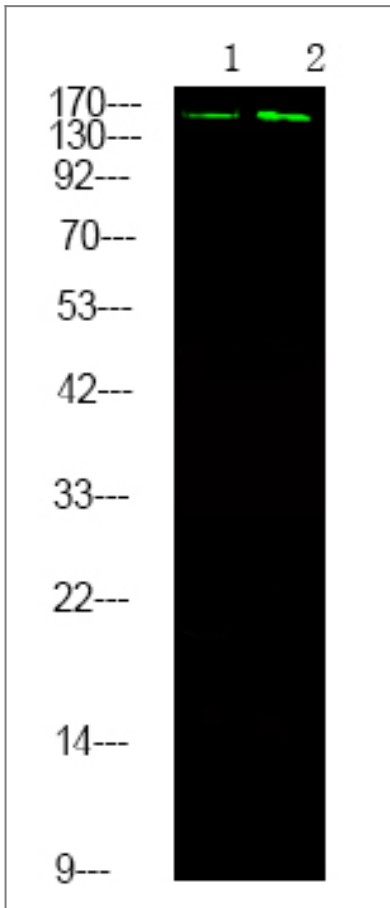
Organism	Gene ID	UniProt ID
Human	<a href="#">1612</a> ;	<a href="#">P53355</a> ;
Mouse	<a href="#">69635</a> ;	<a href="#">Q80YE7</a> ;

**Cellular Localization** [Isoform 1]: Cytoplasm. Cytoplasm, cytoskeleton. Colocalizes with MAP1B in the microtubules and cortical actin fibers.; [Isoform 2]: Cytoplasm. Cytoplasm, cytoskeleton.

**Tissue specificity** Isoform 2 is expressed in normal intestinal tissue as well as in colorectal carcinomas.

**Function** Catalytic activity:ATP + a protein = ADP + a phosphoprotein.,cofactor:Magnesium.,enzyme regulation:Negatively regulated by autophosphorylation on Ser-308.,Function:Calcium/calmodulin-dependent serine/threonine kinase which acts as a positive regulator of apoptosis.,induction:Up-regulated following treatment with interferon-gamma.,similarity:Belongs to the protein kinase superfamily.,similarity:Belongs to the protein kinase superfamily. CAMK Ser/Thr protein kinase family. DAP kinase subfamily.,similarity:Contains 1 death domain.,similarity:Contains 1 protein kinase domain.,similarity:Contains 10 ANK repeats.,subcellular location:Colocalizes with the actin filament system.,

## Validation Data



Western Blot analysis of 1 HeLa cell, 2 LPS 100ng/mL 30min treated ,using primary antibody at 1:1000 dilution. Secondary antibody(catalog#:RS23920) was diluted at 1:10000

## | Contact information

Orders: order.cn@immunoway.com  
Support: support.cn@immunoway.com  
Telephone: 400-8787-807(China)  
Website: <http://www.immunoway.com.cn>  
Address: 2200 Ringwood Ave San Jose, CA 95131 USA



Please scan the QR code to access additional product information:  
**DAPK1 (Phospho Ser289) Rabbit pAb**

---

For Research Use Only. Not for Use in Diagnostic Procedures.

[Antibody](#) | [ELISA Kits](#) | [Protein](#) | [Reagents](#)