

RRAS (Phospho Tyr66) Rabbit pAb

CatalogNo: YP1793 **Orthogonal Validated** 

Key Features

Host Species

- Rabbit

Reactivity

- Human, Mouse, Rat

Applications

- WB

MW

- 24kD (Calculated)

Isotype

- IgG

Storage

Storage* -15°C to -25°C/1 year (Do not lower than -25°C)

Formulation Liquid in PBS containing 50% glycerol, 0.5% BSA and 0.02% sodium azide.

Recommended Dilution Ratios

WB 1:500-2000

Basic Information

Clonality Polyclonal

Immunogen Information

Immunogen Synthesized peptide derived from human R-Ras (Phospho-Tyr66)

Specificity This antibody detects endogenous levels of R-Ras (Phospho-Tyr66) at Human, Mouse, Rat. The name of modified sites may be influenced by many factors, such as species (the modified site was not originally found in human samples) and the change of protein sequence (the previous protein sequence is incomplete, and the protein sequence may be prolonged with the development of protein sequencing technology). When naming, we will use the "numbers" in historical reference to keep the sites consistent with the reports. The antibody binds to the following modification sequence (lowercase letters are modification sites): DSyTK

Target Information

Gene name RRAS

Protein Name R-Ras (Phospho-Tyr66)

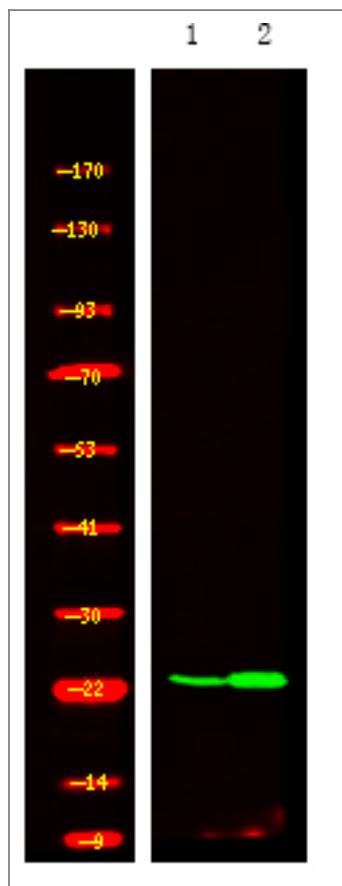
Organism	Gene ID	UniProt ID
Human	6237;	P10301;
Mouse	20130;	P10833;
Rat	361568;	D3Z8L7;

Cellular Localization Cell membrane ; Lipid-anchor ; Cytoplasmic side . Inner surface of plasma membrane possibly with attachment requiring acylation of the C-terminal cysteine (By similarity with RAS) .

Tissue specificity Adipocyte ,Brain ,Uterus ,

Function Function:Regulates the organization of the actin cytoskeleton. ,similarity:Belongs to the small GTPase superfamily. Ras family. ,subcellular location:Inner surface of plasma membrane possibly with attachment requiring acylation of the C-terminal cysteine (By similarity with RAS) . ,subunit:Interacts with PLCE1. ,

Validation Data



Western Blot analysis of A549 cell,2, LPS 100ng/mL 30min treated ,using primary antibody at 1:1000 dilution. Secondary antibody (catalog#:RS23920) was diluted at 1:10000

| Contact information

Orders: order.cn@immunoway.com
Support: support.cn@immunoway.com
Telephone: 400-8787-807(China)
Website: <http://www.immunoway.com.cn>
Address: 2200 Ringwood Ave San Jose, CA 95131 USA



Please scan the QR code to access additional product information:
RRAS (Phospho Tyr66) Rabbit pAb

For Research Use Only. Not for Use in Diagnostic Procedures.

[Antibody](#) | [ELISA Kits](#) | [Protein](#) | [Reagents](#)