

EphA6 (Phospho Tyr978) Rabbit pAb

CatalogNo: YP1790 **Orthogonal Validated** 

Key Features

Host Species

- Rabbit

Reactivity

- Human, Mouse, Rat

Applications

- WB

MW

- 116kD (Observed)

Isotype

- IgG

Storage

Storage* -15°C to -25°C/1 year (Do not lower than -25°C)

Formulation Liquid in PBS containing 50% glycerol, 0.5% BSA and 0.02% sodium azide.

Recommended Dilution Ratios

WB 1:500-2000

Basic Information

Clonality Polyclonal

Immunogen Information

Immunogen Synthesized peptide derived from human EPHA6 (Phospho-Tyr978)

Specificity This antibody detects endogenous levels of EPHA6 (Phospho-Tyr978) at Human, Mouse, Rat. The name of modified sites may be influenced by many factors, such as species (the modified site was not originally found in human samples) and the change of protein sequence (the previous protein sequence is incomplete, and the protein sequence may be prolonged with the development of protein sequencing technology). When naming, we will use the "numbers" in historical reference to keep the sites consistent with the reports. The antibody binds to the following modification sequence (lowercase letters are modification sites): GQyKN

Target Information

Gene name EPHA6 EHK2 HEK12

Protein Name Ephrin type-A receptor 6 (Phospho-Tyr978)

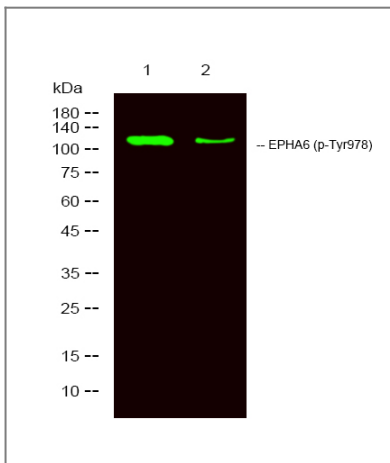
Organism	Gene ID	UniProt ID
Human	285220 ;	Q9UF33 ;
Mouse		Q62413 ;
Rat		P54758 ;

Cellular Localization Membrane ; Single-pass type I membrane protein .

Tissue specificity Expressed in brain and testis.

Function Catalytic activity:ATP + a [protein]-L-tyrosine = ADP + a [protein]-L-tyrosine phosphate. ,Function:Receptor for members of the ephrin-A family. ,similarity:Belongs to the protein kinase superfamily. Tyr protein kinase family. Ephrin receptor subfamily. ,similarity:Contains 1 protein kinase domain. ,similarity:Contains 1 SAM (sterile alpha motif) domain. ,similarity:Contains 2 fibronectin type-III domains. ,tissue specificity:Expressed in brain and testis. ,

Validation Data



Western Blot analysis of 1 HeLa, 2 treated with LPS 100ng/mL 20min, using primary antibody at 1:1000 dilution. Secondary antibody (catalog#:RS23920) was diluted at 1:10000

Contact information

Orders: order.cn@immunoway.com
Support: support.cn@immunoway.com
Telephone: 400-8787-807(China)
Website: http://www.immunoway.com.cn
Address: 2200 Ringwood Ave San Jose, CA 95131 USA



Please scan the QR code
to access additional
product information:
**EphA6 (Phospho
Tyr978) Rabbit pAb**

For Research Use Only. Not for Use in Diagnostic Procedures.

[Antibody](#) | [ELISA Kits](#) | [Protein](#) | [Reagents](#)