

## MKP-7 (Phospho Ser446) Rabbit pAb

CatalogNo: YP1785 **Orthogonal Validated** 

### Key Features

#### Host Species

- Rabbit

#### Reactivity

- Human, Mouse, Rat

#### Applications

- WB

#### MW

- 73kD (Calculated)

#### Isotype

- IgG

### Storage

**Storage\*** -15°C to -25°C/1 year (Do not lower than -25°C)

**Formulation** Liquid in PBS containing 50% glycerol, 0.5% BSA and 0.02% sodium azide.

### Recommended Dilution Ratios

WB 1:500-2000

### Basic Information

**Clonality** Polyclonal

### Immunogen Information

**Immunogen** Synthesized peptide derived from human MKP-7 (Phospho-Ser446)

**Specificity** This antibody detects endogenous levels of MKP-7 (Phospho-Ser446) at Human, Mouse, Rat. The name of modified sites may be influenced by many factors, such as species (the modified site was not originally found in human samples) and the change of protein sequence (the previous protein sequence is incomplete, and the protein sequence may be prolonged with the development of protein sequencing technology). When naming, we will use the "numbers" in historical reference to keep the sites consistent with the reports. The antibody binds to the following modification sequence (lowercase letters are modification sites): QFsPV

## Target Information

**Gene name** DUSP16 KIAA1700 MKP7

**Protein Name** MKP-7 (Phospho-Ser446)

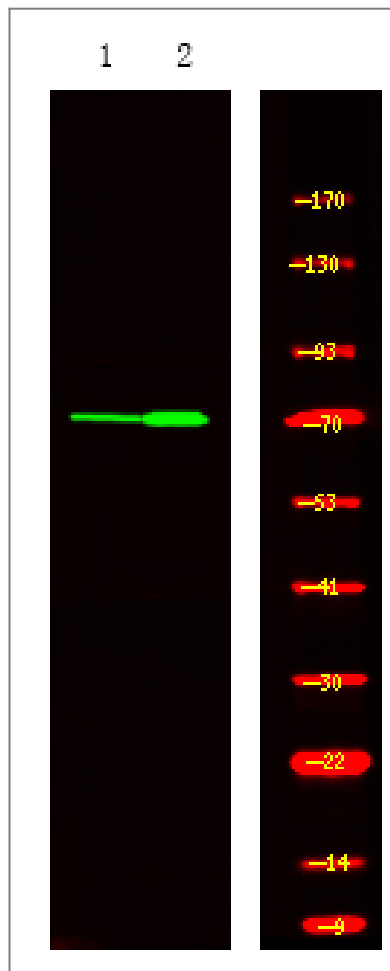
| Organism | Gene ID                 | UniProt ID               |
|----------|-------------------------|--------------------------|
| Human    | <a href="#">80824</a> ; | <a href="#">Q9BY84</a> ; |

**Cellular Localization** Cytoplasm. Nucleus. Cytoplasmic vesicle. After dissociation upon AGTR stimulation, re-associates with ARRB2 on endocytic vesicles.

**Tissue specificity** Bone marrow,Brain,Duodenum,PCR rescued clones,

**Function** Catalytic activity:A phosphoprotein + H(2)O = a protein + phosphate.,Catalytic activity:Protein tyrosine phosphate + H(2)O = protein tyrosine + phosphate.,Function:Involved in the inactivation of MAP kinases.,similarity:Belongs to the protein-tyrosine phosphatase family. Non-receptor class dual specificity subfamily.,similarity:Contains 1 rhodanese domain.,similarity:Contains 1 tyrosine-protein phosphatase domain.,

## Validation Data



Western Blot analysis of 1 HeLa cell, 2, LPS 100ng/mL 30min treated ,using primary antibody at 1:1000 dilution. Secondary antibody(catalog#:RS23920) was diluted at 1:10000

## | Contact information

Orders: order.cn@immunoway.com  
Support: support.cn@immunoway.com  
Telephone: 400-8787-807(China)  
Website: <http://www.immunoway.com.cn>  
Address: 2200 Ringwood Ave San Jose, CA 95131 USA



Please scan the QR code to access additional product information:  
**MKP-7 (Phospho Ser446) Rabbit pAb**

---

For Research Use Only. Not for Use in Diagnostic Procedures.

[Antibody](#) | [ELISA Kits](#) | [Protein](#) | [Reagents](#)