

BORA (Phospho Ser497) Rabbit pAb

CatalogNo: YP1782

Orthogonal Validated 

Key Features

Host Species

- Rabbit

Reactivity

- Human, Mouse, Rat

Applications

- WB

MW

- 61kD (Calculated)

Isotype

- IgG

Recommended Dilution Ratios

WB 1:500-2000

Storage

Storage*

-15°C to -25°C/1 year (Do not lower than -25°C)

Formulation

Liquid in PBS containing 50% glycerol, 0.5% BSA and 0.02% sodium azide.

Basic Information

Clonality

Polyclonal

Immunogen Information

Immunogen

Synthesized peptide derived from human BORA (Phospho-Ser497)

Specificity

This antibody detects endogenous levels of BORA (Phospho-Ser497) at Human, Mouse, Rat. The name of modified sites may be influenced by many factors, such as species (the modified site was not originally found in human samples) and the change of protein sequence (the previous protein sequence is incomplete, and the protein sequence may be prolonged with the development of protein sequencing technology). When naming, we will use the "numbers" in historical reference to keep the sites consistent with the reports. The antibody binds to the following modification sequence (lowercase letters are modification sites): MDsGY

Target Information

Gene name BORA C13orf34
Protein Name BORA (Phospho-Ser497)

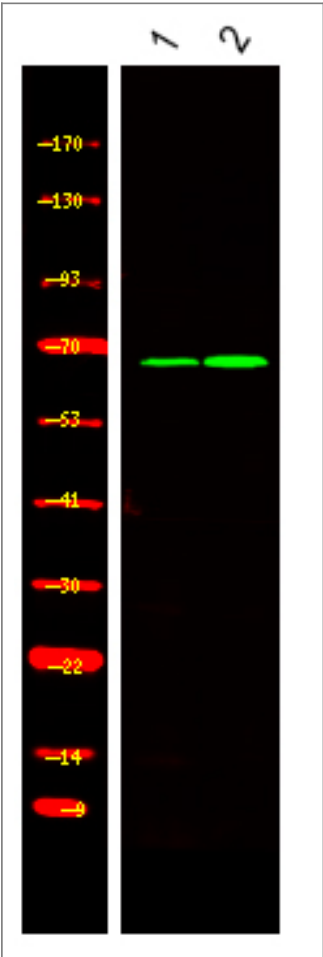
Organism	Gene ID	UniProt ID
Human	79866;	Q6PGQ7;
Mouse	77744;	Q8BS90;
Rat	306102;	Q5M864;

Cellular Localization cytosol,meiotic spindle,

Tissue specificity Bone marrow,Leiomyosarcoma,Rhabdomyosarcoma,Small intestine,Testis carcinom

Function Function:Required for the activation of Aurora-A (AURKA/STK6) at the onset of mitosis.,PTM:Phosphorylated by AURKA/STK6.,similarity:Belongs to the BORA family.,subunit:Interacts with AURKA/STK6.,

Validation Data



Western Blot analysis of 1 Jurkat, 2, LPS 100ng/mL 30min treated ,using primary antibody at 1:1000 dilution. Secondary antibody(catalog#:RS23920) was diluted at 1:10000

| Contact information

Orders: order.cn@immunoway.com
Support: support.cn@immunoway.com
Telephone: 400-8787-807(China)
Website: <http://www.immunoway.com.cn>
Address: 2200 Ringwood Ave San Jose, CA 95131 USA



Please scan the QR code
to access additional
product information:
**BORA (Phospho
Ser497) Rabbit pAb**

For Research Use Only. Not for Use in Diagnostic Procedures.

[Antibody](#) | [ELISA Kits](#) | [Protein](#) | [Reagents](#)