

BTF (Phospho Ser531) Rabbit pAb

CatalogNo: YP1781

Key Features

Host Species

- Rabbit

Reactivity

- Human, Mouse, Rat

Applications

- WB

MW

- 101kD (Calculated)

Isotype

- IgG

Storage

Storage* -15°C to -25°C/1 year (Do not lower than -25°C)

Formulation Liquid in PBS containing 50% glycerol, 0.5% BSA and 0.02% sodium azide.

Recommended Dilution Ratios

WB 1:500-2000

Basic Information

Clonality Polyclonal

Immunogen Information

Immunogen Synthesized peptide derived from human BCLAF1 (Phospho-Ser531)

Specificity This antibody detects endogenous levels of BCLAF1 (Phospho-Ser531) at Human, Mouse, Rat. The name of modified sites may be influenced by many factors, such as species (the modified site was not originally found in human samples) and the change of protein sequence (the previous protein sequence is incomplete, and the protein sequence may be prolonged with the development of protein sequencing technology). When naming, we will use the "numbers" in historical reference to keep the sites consistent with the reports. The antibody binds to the following modification sequence (lowercase letters are modification sites): EEsPL

Target Information

Gene name BCLAF1 BTF KIAA0164

Protein Name Bcl-2-associated transcription factor 1

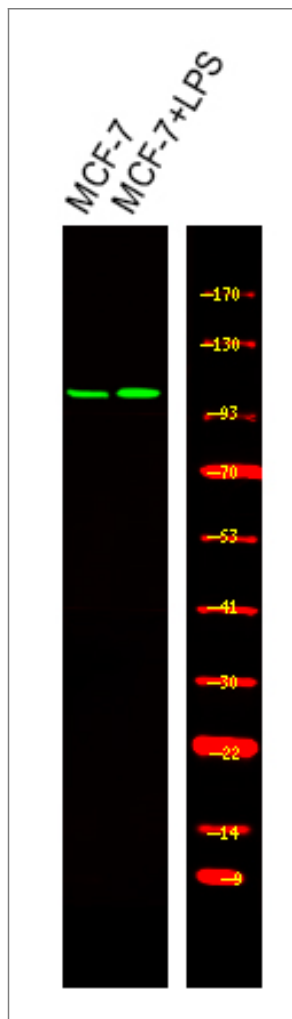
Organism	Gene ID	UniProt ID
Human	9774 ;	Q9NYF8 ;
Mouse	72567 ;	Q8K019 ;

Cellular Localization Cytoplasm. Nucleus. Nucleus speckle . Nucleus, nucleoplasm .

Tissue specificity Ubiquitous.

Function Function:Death-promoting transcriptional repressor.,sequence Caution:Contaminating sequence. Potential poly-A sequence.,subunit:Interacts with Bcl-2 related proteins, EMD, with the adenovirus E1B 19 kDa protein and with DNA.,tissue specificity:Ubiquitous.,

Validation Data



Western Blot analysis of various, using primary antibody at 1:1000 dilution. Secondary antibody(catalog#:RS23920) was diluted at 1:10000

| Contact information

Orders: order.cn@immunoway.com
Support: support.cn@immunoway.com
Telephone: 400-8787-807(China)
Website: <http://www.immunoway.com.cn>
Address: 2200 Ringwood Ave San Jose, CA 95131 USA



Please scan the QR code
to access additional
product information:
**BTF (Phospho
Ser531) Rabbit pAb**

For Research Use Only. Not for Use in Diagnostic Procedures.

[Antibody](#) | [ELISA Kits](#) | [Protein](#) | [Reagents](#)