

VAMP4 (Phospho Ser30) Rabbit pAb

CatalogNo: YP1779

Key Features

Host Species

- Rabbit

Reactivity

- Human,Mouse,Rat

Applications

- WB

MW

- 17kD (Observed)

Isotype

- IgG

Storage

Storage* -15°C to -25°C/1 year (Do not lower than -25°C)

Formulation Liquid in PBS containing 50% glycerol, 0.5% BSA and 0.02% sodium azide.

Recommended Dilution Ratios

WB 1:500-2000

Basic Information

Clonality Polyclonal

Immunogen Information

Immunogen Synthesized peptide derived from human VAMP4 (Phospho-Ser30)

Specificity This antibody detects endogenous levels of VAMP4 (Phospho-Ser30) at Human, Mouse,Rat.The name of modified sites may be influenced by many factors, such as species (the modified site was not originally found in human samples) and the change of protein sequence (the previous protein sequence is incomplete, and the protein sequence may be prolonged with the development of protein sequencing technology). When naming, we will use the "numbers" in historical reference to keep the sites consistent with the reports. The antibody binds to the following modification sequence (lowercase letters are modification sites):DDsDE

| Target Information

Gene name VAMP4

Protein Name VAMP4 (Phospho-Ser30)

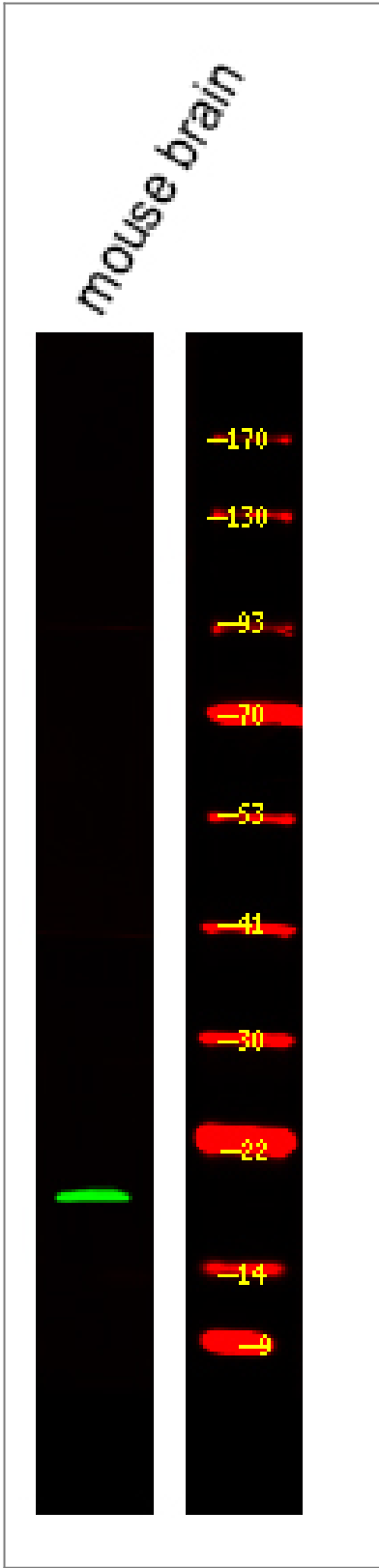
Organism	Gene ID	UniProt ID
Human	8674 ;	O75379 ;
Mouse		O70480 ;

Cellular Localization Golgi apparatus , trans-Golgi network membrane ; Single-pass type IV membrane protein . Associated with trans Golgi network (TGN) and newly formed immature secretory granules (ISG) . Not found on the mature secretory organelles.

Tissue specificity B-cell ,Bone marrow ,Epithelium ,Liver ,Urinary bladder ,

Function Function:Involved in the pathway that functions to remove an inhibitor (probably synaptotagmin-4) of calcium-triggered exocytosis during the maturation of secretory granules. May be a marker for this sorting pathway that is critical for remodeling the secretory response of granule. ,similarity:Belongs to the synaptobrevin family. ,similarity:Contains 1 v-SNARE coiled-coil homology domain. ,subcellular location:Associated with trans Golgi network (TGN) and newly formed immature secretory granules (ISG) . Not found on the mature secretory organelles. ,subunit:Identified in a complex containing STX6 , STX13 , VAMP4 and VTI1A. ,

| Validation Data



Western Blot analysis of various,using primary antibody at 1:1000 dilution.
Secondary antibody (catalog#:RS23920) was diluted at 1:10000

Contact information

Orders: order.cn@immunoway.com
Support: support.cn@immunoway.com
Telephone: 400-8787-807(China)
Website: <http://www.immunoway.com.cn>
Address: 2200 Ringwood Ave San Jose, CA 95131 USA



Please scan the QR code
to access additional
product information:
**VAMP4 (Phospho
Ser30) Rabbit pAb**

For Research Use Only. Not for Use in Diagnostic Procedures.

[Antibody](#) | [ELISA Kits](#) | [Protein](#) | [Reagents](#)