

MST3 (Phospho Thr18) Rabbit pAb

CatalogNo: YP1776

Key Features

Host Species

- Rabbit

Reactivity

- Human,Mouse,Rat

Applications

- WB

MW

- 50kD (Observed)

Isotype

- IgG

Storage

Storage* -15°C to -25°C/1 year(Do not lower than -25°C)

Formulation Liquid in PBS containing 50% glycerol, 0.5% BSA and 0.02% sodium azide.

Recommended Dilution Ratios

WB 1:500-2000

Basic Information

Clonality Polyclonal

Immunogen Information

Immunogen Synthesized peptide derived from human MST3 (Phospho-Thr18)

Specificity This antibody detects endogenous levels of MST3 (Phospho-Thr18) at Human, Mouse,Rat.The name of modified sites may be influenced by many factors, such as species (the modified site was not originally found in human samples) and the change of protein sequence (the previous protein sequence is incomplete, and the protein sequence may be prolonged with the development of protein sequencing technology). When naming, we will use the "numbers" in historical reference to keep the sites consistent with the reports. The antibody binds to the following modification sequence (lowercase letters are modification sites):RATLP

| Target Information

Gene name STK24 MST3 STK3

Protein Name MST3 (Phospho-Thr18)

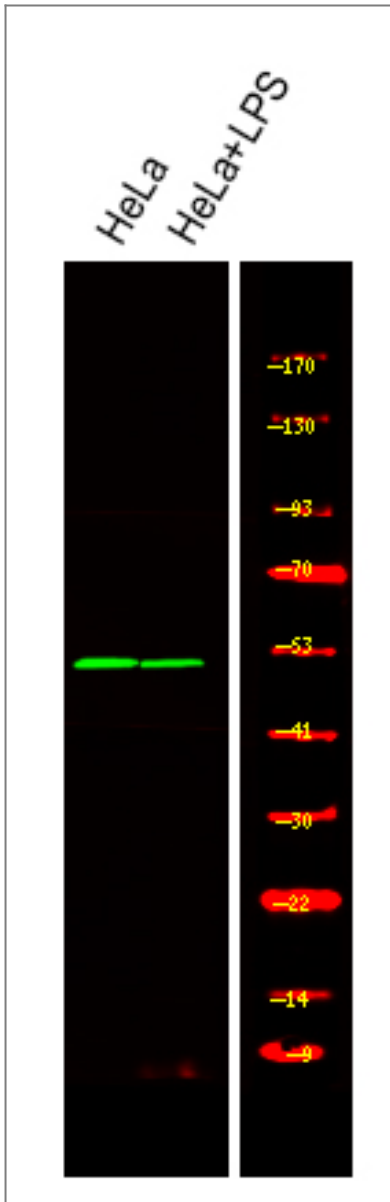
Organism	Gene ID	UniProt ID
Human	8428;	Q9Y6E0;
Mouse	223255;	Q99KH8;
Rat	361092;	B0LT89;

Cellular Localization Cytoplasm. Nucleus. Membrane. The truncated form (MST3/N) translocates to the nucleus. Colocalizes with STK38L in the membrane.

Tissue specificity Isoform A is ubiquitous. Isoform B is expressed in brain with high expression in hippocampus and cerebral cortex.

Function Catalytic activity:ATP + a protein = ADP + a phosphoprotein.,cofactor:Manganese. Only isoform A requires manganese.,Function:Protein kinase that act on both serine and threonine residues.,PTM:Autophosphorylated. Isoform B is activated by phosphorylation by PKA.,similarity:Belongs to the protein kinase superfamily. STE Ser/Thr protein kinase family. STE20 subfamily.,similarity:Contains 1 protein kinase domain.,tissue specificity:Isoform A is ubiquitous. Isoform B is expressed in brain with high expression in hippocampus and cerebral cortex.,

| Validation Data



Western Blot analysis of various,using primary antibody at 1:1000 dilution. Secondary antibody(catalog#:RS23920) was diluted at 1:10000

Contact information

Orders: order.cn@immunoway.com
 Support: support.cn@immunoway.com
 Telephone: 400-8787-807(China)
 Website: <http://www.immunoway.com.cn>
 Address: 2200 Ringwood Ave San Jose, CA 95131 USA



Please scan the QR code to access additional product information:
MST3 (Phospho Thr18) Rabbit pAb

For Research Use Only. Not for Use in Diagnostic Procedures.

[Antibody](#) | [ELISA Kits](#) | [Protein](#) | [Reagents](#)