

SLAM (Phospho Tyr327) Rabbit pAb

CatalogNo: YP1764

Key Features

Host Species

- Rabbit

Reactivity

- Human, Mouse, Rat

Applications

- WB

MW

- 37kD (Calculated)

Isotype

- IgG

Storage

Storage* -15°C to -25°C/1 year (Do not lower than -25°C)

Formulation Liquid in PBS containing 50% glycerol, 0.5% BSA and 0.02% sodium azide.

Recommended Dilution Ratios

WB 1:500-2000

Basic Information

Clonality Polyclonal

Immunogen Information

Immunogen Synthesized peptide derived from human SLAM (Phospho-Tyr327)

Specificity This antibody detects endogenous levels of SLAM (Phospho-Tyr327) at Human, Mouse, Rat. The name of modified sites may be influenced by many factors, such as species (the modified site was not originally found in human samples) and the change of protein sequence (the previous protein sequence is incomplete, and the protein sequence may be prolonged with the development of protein sequencing technology). When naming, we will use the "numbers" in historical reference to keep the sites consistent with the reports. The antibody binds to the following modification sequence (lowercase letters are modification sites): TVyAS

| Target Information

Gene name SLAMF1 SLAM

Protein Name CD150 (Phospho-Tyr327)

Organism	Gene ID	UniProt ID
Human	6504 ;	Q13291 ;
Mouse	27218 ;	Q9QUM4 ;

Cellular Localization

Cell membrane ; Single-pass type I membrane protein. Present on the surface of B-cells and T-cells. Located at the plasma membrane contacts between neighboring T-cells (PubMed:11806999). .; [Isoform 3]: Secreted .; [Isoform 4]: Cell membrane . Overexpressed isoform 4 is detected on the cell surface. In glioma cell lines endogenous isoform 4 is detected predominantly in the cytoplasm and colocalized with endoplasmic reticulum and Golgi markers. .

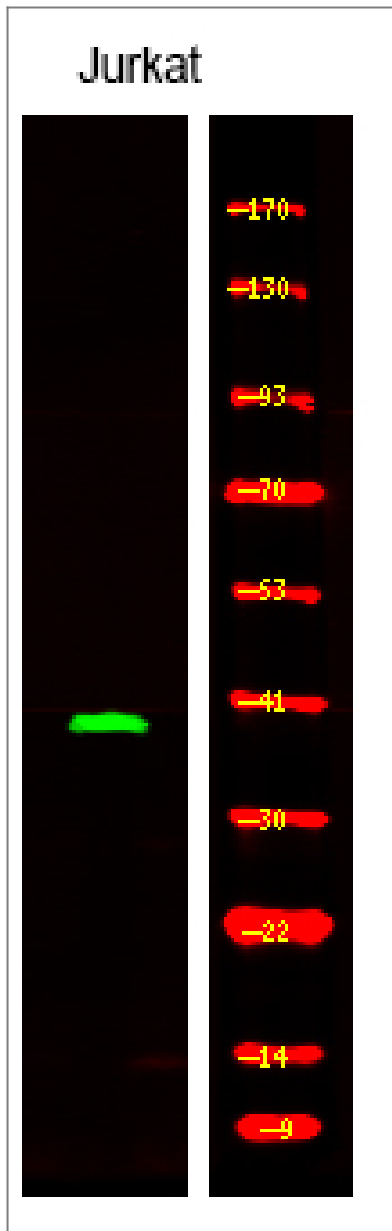
Tissue specificity

Constitutively expressed on peripheral blood memory T-cells, T-cell clones, immature thymocytes and a proportion of B-cells, and is rapidly induced on naive T-cells after activation (PubMed:7617038). Activated B-cells express isoform 1, isoform 3 and a cytoplasmic isoform (PubMed:9091591). Isoform 4 is expressed in B-cells, primary T-cells, dendritic cells and macrophages. Isoform 4 is expressed in tumors of the central nervous system (PubMed:25710480).

Function

Domain:The most membrane-proximal SH2-binding motif interacts with SH2 domain of SH2D1A and does not need to be phosphorylated on tyrosine residues.,Function:High-affinity self-ligand important in bidirectional T-cell to B-cell stimulation. SLAM-induced signal-transduction events in T-lymphocytes are different from those in B-cells. Two modes of SLAM signaling are likely to exist: one in which the inhibitor SH2D1A acts as a negative regulator and another in which protein-tyrosine phosphatase 2C (PTPN11)-dependent signal transduction operates.,PTM:Phosphorylated by FYN.,similarity:Contains 1 Ig-like C2-type (immunoglobulin-like) domain.,similarity:Contains 1 Ig-like V-type (immunoglobulin-like) domain.,subcellular location:Present on the surface of B-cells and T-cells.,subunit:Its cytoplasmic domain interacts with SH2 domain protein 1A (SH2D1A), and with PTPN11. Interacts with INPP5D/SHIP1. Binds to Measles virus HN protein and acts as a receptor for this virus.,tissue specificity:Constitutively expressed on peripheral blood memory T-cells, T-cell clones, immature thymocytes, and a proportion of B-cells, and is rapidly induced on naive T-cells after activation.,

| Validation Data



Western Blot analysis of various,using primary antibody at 1:1000 dilution.
Secondary antibody(catalog#:RS23920) was diluted at 1:10000

Contact information

Orders: order.cn@immunoway.com
 Support: support.cn@immunoway.com
 Telephone: 400-8787-807(China)
 Website: <http://www.immunoway.com.cn>
 Address: 2200 Ringwood Ave San Jose, CA 95131 USA



Please scan the QR code
to access additional
product information:
**SLAM (Phospho
Tyr327) Rabbit pAb**