

CRMP1 (Phospho Tyr504) Rabbit pAb

CatalogNo: YP1756

Key Features

Host Species

- Rabbit

Reactivity

- Human, Mouse, Rat

Applications

- WB

MW

- 63kD (Calculated)

Isotype

- IgG

Storage

Storage* -15°C to -25°C/1 year (Do not lower than -25°C)

Formulation Liquid in PBS containing 50% glycerol, 0.5% BSA and 0.02% sodium azide.

Recommended Dilution Ratios

WB 1:500-2000

Basic Information

Clonality Polyclonal

Immunogen Information

Immunogen Synthesized peptide derived from human CRMP-1 (Phospho-Tyr504)

Specificity This antibody detects endogenous levels of CRMP-1 (Phospho-Tyr504) at Human, Mouse, Rat. The name of modified sites may be influenced by many factors, such as species (the modified site was not originally found in human samples) and the change of protein sequence (the previous protein sequence is incomplete, and the protein sequence may be prolonged with the development of protein sequencing technology). When naming, we will use the "numbers" in historical reference to keep the sites consistent with the reports. The antibody binds to the following modification sequence (lowercase letters are modification sites): PVyEV

| Target Information

Gene name CRMP1 DPYSL1 ULIP3

Protein Name Dihydropyrimidinase-related protein 1

Organism	Gene ID	UniProt ID
Human	1400 ;	Q14194 ;
Mouse	12933 ;	P97427 ;
Rat	25415 ;	Q62950 ;

**Cellular
Localization**

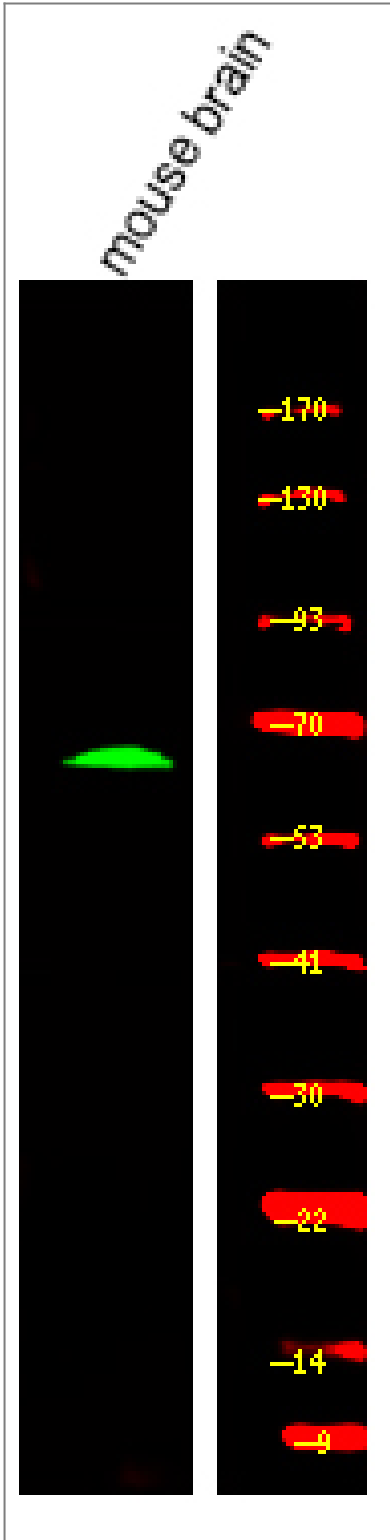
Cytoplasm . Cytoplasm, cytoskeleton, microtubule organizing center, centrosome . Cytoplasm, cytoskeleton, spindle . Cell projection, growth cone . Cytoplasm, cytoskeleton . Perikaryon . Associated with centrosomes and the mitotic spindle during metaphase (PubMed:11562390). Colocalizes with FLNA and tubulin in the central region of DRG neuron growth cone (By similarity). Following SEMA3A stimulation of DRG neurons, colocalizes with F-actin (By similarity). .

Tissue specificity Brain.

Function

Function:Necessary for signaling by class 3 semaphorins and subsequent remodeling of the cytoskeleton. Plays a role in axon guidance, invasive growth and cell migration.,similarity:Belongs to the DHOase family. Hydantoinase/dihydropyrimidinase subfamily.,subcellular location:Associated with centrosomes and the mitotic spindle during metaphase.,subunit:Homotetramer, and heterotetramer with DPYSL2, DPYSL3, DPYSL4 or DPYSL5. Interacts with PLXNA1.,tissue specificity:Brain.,

| Validation Data



Western Blot analysis of various, using primary antibody at 1:1000 dilution. Secondary antibody(catalog#:RS23920) was diluted at 1:10000

Contact information

Orders: order.cn@immunoway.com
 Support: support.cn@immunoway.com
 Telephone: 400-8787-807(China)
 Website: <http://www.immunoway.com.cn>
 Address: 2200 Ringwood Ave San Jose, CA 95131 USA



Please scan the QR code to access additional product information:
CRMP1 (Phospho Tyr504) Rabbit pAb

