

## NUAK1 (Phospho Ser600) Rabbit pAb

CatalogNo: YP1730

### Key Features

#### Host Species

- Rabbit

#### Reactivity

- Human, Mouse, Rat

#### Applications

- WB

#### MW

- 73kD (Calculated)

#### Isotype

- IgG

### Storage

**Storage\*** -15°C to -25°C/1 year (Do not lower than -25°C)

**Formulation** Liquid in PBS containing 50% glycerol, 0.5% BSA and 0.02% sodium azide.

### Recommended Dilution Ratios

WB 1:500-2000

### Basic Information

**Clonality** Polyclonal

### Immunogen Information

**Immunogen** Synthesized peptide derived from human NuaK1 (Phospho-Ser600)

**Specificity** This antibody detects endogenous levels of NuaK1 (Phospho-Ser600) at Human, Mouse, Rat. The name of modified sites may be influenced by many factors, such as species (the modified site was not originally found in human samples) and the change of protein sequence (the previous protein sequence is incomplete, and the protein sequence may be prolonged with the development of protein sequencing technology). When naming, we will use the "numbers" in historical reference to keep the sites consistent with the reports. The antibody binds to the following modification sequence (lowercase letters are modification sites): IRsCV

## Target Information

**Gene name** NUA1 ARK5 KIAA0537 OMPHK1

**Protein Name** NuaK1 (Phospho-Ser600)

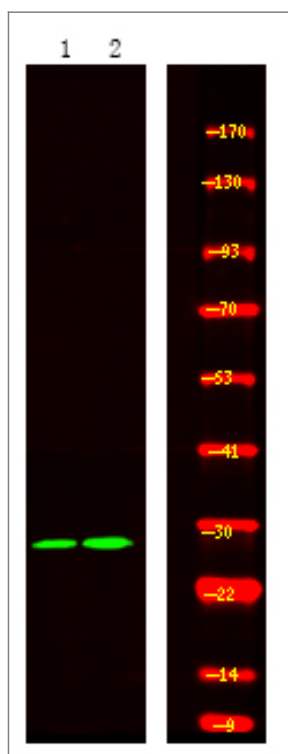
Organism	Gene ID	UniProt ID
Human	<a href="#">9891</a> ;	<a href="#">O60285</a> ;
Mouse	<a href="#">77976</a> ;	<a href="#">Q641K5</a> ;

**Cellular Localization** Nucleus . Cytoplasm .

**Tissue specificity** Expressed at high levels in heart and brain, and at lower levels in skeletal muscle, kidney, ovary, placenta, lung and liver. Highly up-regulated in colorectal cancer cell lines.

**Function** Catalytic activity:ATP + a protein = ADP + a phosphoprotein.,cofactor:Magnesium.,enzyme regulation:Activated by PKB/AKT1 during glucose starvation. Activated by phosphorylation on Thr-211 by STK11 in complex with STE20-related adapter-alpha (STRAD alpha) pseudo kinase and CAB39.,Function:Involved in tolerance to glucose starvation. Phosphorylates ATM. Suppresses Fas-induced apoptosis by phosphorylation of CASP6, thus suppressing the activation of the caspase and the subsequent cleavage of CFLAR.,similarity:Belongs to the protein kinase superfamily.,similarity:Belongs to the protein kinase superfamily. CAMK Ser/Thr protein kinase family. SNF1 subfamily.,similarity:Contains 1 protein kinase domain.,tissue specificity:Expressed at high levels in heart and brain, and at lower levels in skeletal muscle, kidney, ovary, placenta, lung and liver.,

## Validation Data



Western Blot analysis of mouse brainrat-brain ,using primary antibody at 1:1000 dilution. Secondary antibody(catalog#:RS23920) was diluted at 1:10000

## | Contact information

Orders: order.cn@immunoway.com  
Support: support.cn@immunoway.com  
Telephone: 400-8787-807(China)  
Website: <http://www.immunoway.com.cn>  
Address: 2200 Ringwood Ave San Jose, CA 95131 USA



Please scan the QR code to access additional product information:  
**NUAK1 (Phospho Ser600) Rabbit pAb**

---

For Research Use Only. Not for Use in Diagnostic Procedures.

[Antibody](#) | [ELISA Kits](#) | [Protein](#) | [Reagents](#)