

## eIF6 (Phospho Ser235) Rabbit pAb

CatalogNo: YP1728 **Orthogonal Validated** 

### Key Features

#### Host Species

- Rabbit

#### Reactivity

- Human, Mouse, Rat

#### Applications

- WB

#### MW

- 27kD (Calculated)

#### Isotype

- IgG

### Storage

**Storage\*** -15°C to -25°C/1 year (Do not lower than -25°C)

**Formulation** Liquid in PBS containing 50% glycerol, 0.5% BSA and 0.02% sodium azide.

### Recommended Dilution Ratios

WB 1:500-2000

### Basic Information

**Clonality** Polyclonal

### Immunogen Information

**Immunogen** Synthesized peptide derived from human EIF6 (Phospho-Ser235)

**Specificity** This antibody detects endogenous levels of EIF6 (Phospho-Ser235) at Human, Mouse, Rat. The name of modified sites may be influenced by many factors, such as species (the modified site was not originally found in human samples) and the change of protein sequence (the previous protein sequence is incomplete, and the protein sequence may be prolonged with the development of protein sequencing technology). When naming, we will use the "numbers" in historical reference to keep the sites consistent with the reports. The antibody binds to the following modification sequence (lowercase letters are modification sites): ATsMR

## Target Information

**Gene name** EIF6 EIF3A ITGB4BP OK/SW-cl.27

**Protein Name** EIF6 (Phospho-Ser235)

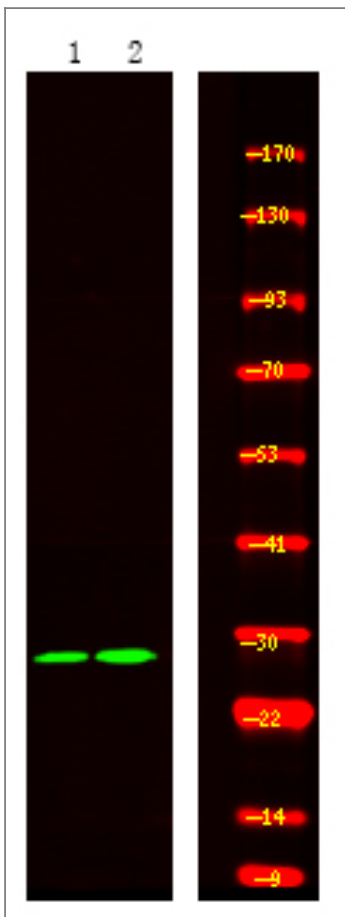
Organism	Gene ID	UniProt ID
Human	<a href="#">3692</a> ;	<a href="#">P56537</a> ;
Mouse	<a href="#">16418</a> ;	<a href="#">O55135</a> ;
Rat	<a href="#">305506</a> ;	<a href="#">Q3KRD8</a> ;

**Cellular Localization** Cytoplasm. Nucleus, nucleolus. Shuttles between cytoplasm and nucleus/nucleolus.

**Tissue specificity** Expressed at very high levels in colon carcinoma with lower levels in normal colon and ileum and lowest levels in kidney and muscle (at protein level).

**Function** Function: Binds to the 60S ribosomal subunit and prevents its association with the 40S ribosomal subunit to form the 80S initiation complex., similarity: Belongs to the eIF-6 family., subunit: Monomer.,

## Validation Data



Western Blot analysis of 1 HeLa cell, 2 LPS 100ng/mL 30min treated ,using primary antibody at 1:1000 dilution. Secondary antibody(catalog#:RS23920) was diluted at 1:10000

## | Contact information

Orders: order.cn@immunoway.com  
Support: support.cn@immunoway.com  
Telephone: 400-8787-807(China)  
Website: <http://www.immunoway.com.cn>  
Address: 2200 Ringwood Ave San Jose, CA 95131 USA



Please scan the QR code to access additional product information:  
**eIF6 (Phospho Ser235) Rabbit pAb**

---

For Research Use Only. Not for Use in Diagnostic Procedures.

[Antibody](#) | [ELISA Kits](#) | [Protein](#) | [Reagents](#)