

## MLTK (Phospho Ser165) Rabbit pAb

CatalogNo: YP1725

### Key Features

#### Host Species

- Rabbit

#### Reactivity

- Human, Mouse, Rat

#### Applications

- WB

#### MW

- 88kD (Calculated)

#### Isotype

- IgG

### Storage

**Storage\*** -15°C to -25°C/1 year (Do not lower than -25°C)

**Formulation** Liquid in PBS containing 50% glycerol, 0.5% BSA and 0.02% sodium azide.

### Recommended Dilution Ratios

WB 1:500-2000

### Basic Information

**Clonality** Polyclonal

### Immunogen Information

**Immunogen** Synthesized peptide derived from human ZAK (Phospho-Ser165)

**Specificity** This antibody detects endogenous levels of ZAK (Phospho-Ser165) at Human, Mouse, Rat. The name of modified sites may be influenced by many factors, such as species (the modified site was not originally found in human samples) and the change of protein sequence (the previous protein sequence is incomplete, and the protein sequence may be prolonged with the development of protein sequencing technology). When naming, we will use the "numbers" in historical reference to keep the sites consistent with the reports. The antibody binds to the following modification sequence (lowercase letters are modification sites): HMsLV

---

## | Target Information

**Gene name** MLTK ZAK HCCS4

**Protein Name** Mitogen-activated protein kinase kinase kinase MLT

Organism	Gene ID	UniProt ID
Human	<a href="#">51776</a> ;	<a href="#">Q9NYL2</a> ;
Mouse	<a href="#">65964</a> ;	<a href="#">Q9ESL4</a> ;

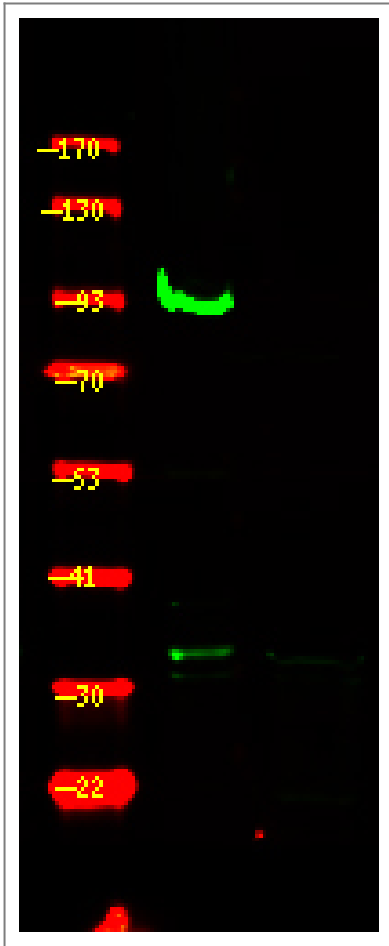
**Cellular Localization** Cytoplasm . Nucleus . Translocates to the nucleus upon ultraviolet B irradiation. .

**Tissue specificity** Ubiquitously expressed. Isoform 2 is the predominant form in all tissues examined, except for liver, in which isoform 1 is more highly expressed.

**Function** Catalytic activity:ATP + a protein = ADP + a phosphoprotein.,cofactor:Magnesium.,enzyme regulation:Activated by phosphorylation by PKN1 and autophosphorylation on Thr-161 and Ser-165.,Function:Stress-activated component of a protein kinase signal transduction cascade. Regulates the JNK and p38 pathways. Pro-apoptotic. Role in regulation of S and G2 cell cycle checkpoint by direct phosphorylation of CHEK2. Isoform 1, but not isoform 2, causes cell shrinkage and disruption of actin stress fibers. Isoform 1 may have role in neoplastic cell transformation and cancer development. Isoform 1, but not isoform 2, phosphorylates histone H3 at 'Ser-28'. ,similarity:Belongs to the protein kinase superfamily. STE Ser/Thr protein kinase family. MAP kinase kinase kinase subfamily.,similarity:Contains 1 protein kinase domain.,similarity:Contains 1 SAM (sterile alpha motif) domain.,subcellular location:Translocates to the nucleus upon ultraviolet B irradiation.,subunit:Homodimer. Interacts with PKN1 and ZNF33A.,tissue specificity:Ubiquitously expressed. Isoform 2 is the predominant form in all tissues examined, except for liver, in which isoform 1 is more highly expressed.,

---

## | Validation Data



Western Blot analysis of HL-60 cell ,using primary antibody at 1:1000 dilution. Secondary antibody(catalog#:RS23920) was diluted at 1:10000

## Contact information

Orders: [order.cn@immunoway.com](mailto:order.cn@immunoway.com)  
Support: [support.cn@immunoway.com](mailto:support.cn@immunoway.com)  
Telephone: 400-8787-807(China)  
Website: <http://www.immunoway.com.cn>  
Address: 2200 Ringwood Ave San Jose, CA 95131 USA



Please scan the QR code to access additional product information:  
**MLTK (Phospho Ser165) Rabbit pAb**

For Research Use Only. Not for Use in Diagnostic Procedures.

[Antibody](#) | [ELISA Kits](#) | [Protein](#) | [Reagents](#)