

SRPK1 (Phospho Thr601) Rabbit pAb

CatalogNo: YP1720 **Orthogonal Validated** 

Key Features

Host Species

- Rabbit

Reactivity

- Human, Mouse, Rat

Applications

- WB

MW

- 74kD (Observed)

Isotype

- IgG

Storage

Storage* -15°C to -25°C/1 year (Do not lower than -25°C)

Formulation Liquid in PBS containing 50% glycerol, 0.5% BSA and 0.02% sodium azide.

Recommended Dilution Ratios

WB 1:500-2000

Basic Information

Clonality Polyclonal

Immunogen Information

Immunogen Synthesized peptide derived from human SRPK1 (Phospho-Thr601)

Specificity This antibody detects endogenous levels of SRPK1 (Phospho-Thr601) at Human, Mouse, Rat. The name of modified sites may be influenced by many factors, such as species (the modified site was not originally found in human samples) and the change of protein sequence (the previous protein sequence is incomplete, and the protein sequence may be prolonged with the development of protein sequencing technology). When naming, we will use the "numbers" in historical reference to keep the sites consistent with the reports. The antibody binds to the following modification sequence (lowercase letters are modification sites): HItKL

| Target Information

Gene name SRPK1

Protein Name SRPK1 (Phospho-Thr601)

Organism	Gene ID	UniProt ID
Human	6732 ;	Q96SB4 ;
Mouse	20815 ;	O70551 ;

Cellular Localization

[Isoform 2]: Cytoplasm. Nucleus. Nucleus matrix. Microsome. Shuttles between the nucleus and the cytoplasm. Inhibition of the Hsp90 ATPase activity, osmotic stress and interaction with HHV-1 ICP27 protein can induce its translocation to the nucleus. KAT5/TIP60 inhibits its nuclear translocation.; [Isoform 1]: Cytoplasm. Nucleus matrix. Microsome. Mainly localized in the microsomal fraction and the cytoplasm, and to a lesser extent in the nuclear matrix.; Cytoplasm . Nucleus, nucleoplasm . Nucleus speckle . Chromosome . Preferentially localizes to the promoter of gene coding regions. .

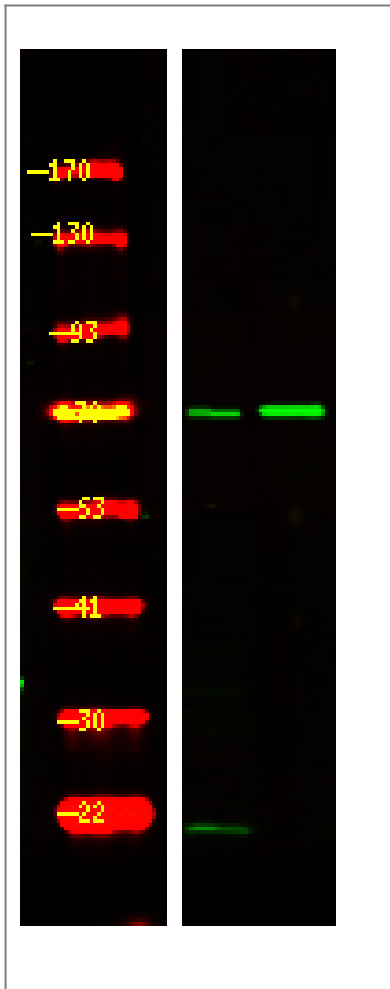
Tissue specificity

Isoform 2 is predominantly expressed in the testis but is also present at lower levels in heart, ovary, small intestine, liver, kidney, pancreas and skeletal muscle. Isoform 1 is only seen in the testis, at lower levels than isoform 2. Highly expressed in different erythroid and lymphoid cell lines, with isoform 2 being far more abundant than isoform 1.

Function

Catalytic activity:ATP + a protein = ADP + a phosphoprotein.,cofactor:Magnesium.,enzyme regulation:Activated by phosphorylation on Ser-51 and Ser-555.,Function:Plays a central role in the regulatory network for splicing, controlling the intranuclear distribution of splicing factors in interphase cells and the reorganization of nuclear speckles during mitosis. Hyperphosphorylates RS domain-containing proteins such as SFRS1 and SFRS2 on serine residues during metaphase but at lower levels during interphase. Locks onto SFRS1 to form a stable complex and processively phosphorylates the RS domain. Appears to mediate HBV core protein phosphorylation which is a prerequisite for pregenomic RNA encapsidation into viral capsids.,similarity:Belongs to the protein kinase superfamily. CMGC Ser/Thr protein kinase family.,similarity:Contains 1 protein kinase domain.,subunit:Present in a seven component complex, the toposome, which separates entangled circular chromatin DNA during chromosome segregation. The extended N-terminal domain of isoform 1 binds to the nuclear scaffold-associated protein SAFB suggesting this isoform may phosphorylate splicing factors in close vicinity to the nuclear matrix.,tissue specificity:Isoform 2 is predominantly expressed in the testis but is also present at lower levels in heart, ovary, small intestine, liver, kidney, pancreas and skeletal muscle. Isoform 1 is only seen in the testis, at lower levels than isoform 2.,

| Validation Data



Western Blot analysis of 1 HepG2 cell, 2 LPS 100ng/mL 30min treated ,using primary antibody at 1:1000 dilution. Secondary antibody(catalog#:RS23920) was diluted at 1:10000

Contact information

Orders: order.cn@immunoway.com
Support: support.cn@immunoway.com
Telephone: 400-8787-807(China)
Website: <http://www.immunoway.com.cn>
Address: 2200 Ringwood Ave San Jose, CA 95131 USA



Please scan the QR code to access additional product information:
SRPK1 (Phospho Thr601) Rabbit pAb

For Research Use Only. Not for Use in Diagnostic Procedures.

[Antibody](#) | [ELISA Kits](#) | [Protein](#) | [Reagents](#)