

S100A9 (Phospho Thr113) Rabbit pAb

CatalogNo: YP1699

Orthogonal Validated 

Key Features

Host Species

- Rabbit

Reactivity

- Human, Mouse, Rat

Applications

- WB

MW

- 13kD (Calculated)

Isotype

- IgG

Recommended Dilution Ratios

WB 1:500-2000

Storage

Storage*

-15°C to -25°C/1 year (Do not lower than -25°C)

Formulation

Liquid in PBS containing 50% glycerol, 0.5% BSA and 0.02% sodium azide.

Basic Information

Clonality

Polyclonal

Immunogen Information

Immunogen

Synthesized peptide derived from human S100A9 (Phospho-Thr113)

Specificity

This antibody detects endogenous levels of S100A9 (Phospho-Thr113) at Human, Mouse, Rat. The name of modified sites may be influenced by many factors, such as species (the modified site was not originally found in human samples) and the change of protein sequence (the previous protein sequence is incomplete, and the protein sequence may be prolonged with the development of protein sequencing technology). When naming, we will use the "numbers" in historical reference to keep the sites consistent with the reports. The antibody binds to the following modification sequence (lowercase letters are modification sites): EGtP

| Target Information

Gene name S100A9 CAGB CFAG MRP14

Protein Name S100A9 (Phospho-Thr113)

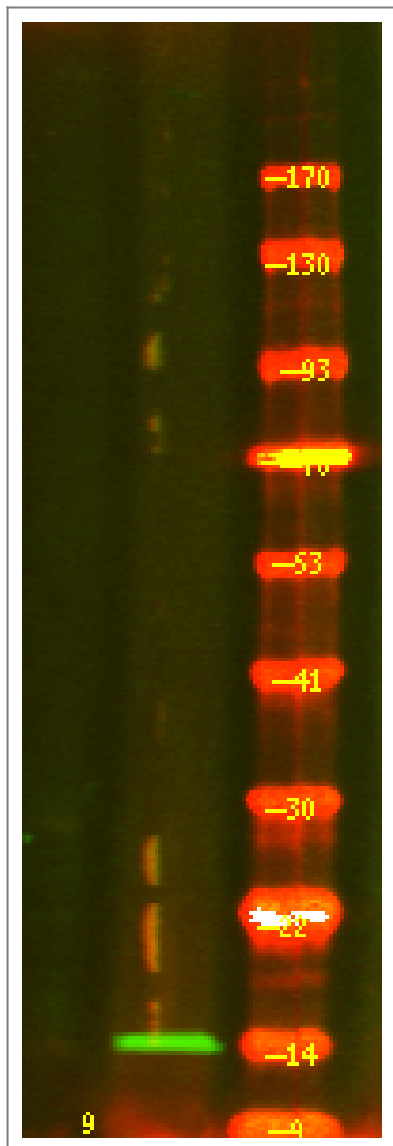
Organism	Gene ID	UniProt ID
Human	6280 ;	P06702 ;
Mouse	20202 ;	P31725 ;
Rat	94195 ;	P50116 ;

Cellular Localization Secreted. Cytoplasm . Cytoplasm, cytoskeleton . Cell membrane ; Peripheral membrane protein . Predominantly localized in the cytoplasm. Upon elevation of the intracellular calcium level, translocated from the cytoplasm to the cytoskeleton and the cell membrane (PubMed:18786929). Upon neutrophil activation or endothelial adhesion of monocytes, is secreted via a microtubule-mediated, alternative pathway (PubMed:15598812). .

Tissue specificity Calprotectin (S100A8/9) is predominantly expressed in myeloid cells. Except for inflammatory conditions, the expression is restricted to a specific stage of myeloid differentiation since both proteins are expressed in circulating neutrophils and monocytes but are absent in normal tissue macrophages and lymphocytes. Under chronic inflammatory conditions, such as psoriasis and malignant disorders, also expressed in the epidermis. Found in high concentrations at local sites of inflammation or in the serum of patients with inflammatory diseases such as rheumatoid, cystic fibrosis, inflammatory bowel disease, Crohn's disease, giant cell arteritis, cystic fibrosis, Sjogren's syndrome, systemic lupus erythematosus, and progressive systemic sclerosis. Involved in the formation and deposition of amyloids in the aging prostate known as corpora amylacea inclusions. Strongly up-regulated in many tumors, including gastric, esophageal, colon, pancreatic, bladder, ovarian, thyroid, breast and skin cancers.

Function Function:Expressed by macrophages in acutely inflamed tissues and in chronic inflammations. Seem to be an inhibitor of protein kinases. Also expressed in epithelial cells constitutively or induced during dermatoses. May interact with components of the intermediate filaments in monocytes and epithelial cells.,miscellaneous:Has been shown to bind calcium.,similarity:Belongs to the S-100 family.,similarity:Contains 2 EF-hand domains.,subunit:Interacts with CEACAM3 in a calcium-dependent manner.,

| Validation Data



Western Blot analysis of 1 A549 cell, 2 LPS 100ng/mL 30min treated ,using primary antibody at 1:1000 dilution. Secondary antibody(catalog#:RS23920) was diluted at 1:10000

Contact information

Orders: order.cn@immunoway.com
 Support: support.cn@immunoway.com
 Telephone: 400-8787-807(China)
 Website: <http://www.immunoway.com.cn>
 Address: 2200 Ringwood Ave San Jose, CA 95131 USA



Please scan the QR code to access additional product information:
S100A9 (Phospho Thr113) Rabbit pAb

For Research Use Only. Not for Use in Diagnostic Procedures.

[Antibody](#) | [ELISA Kits](#) | [Protein](#) | [Reagents](#)