

ROR1 (Phospho Tyr786) Rabbit pAb

CatalogNo: YP1694 **Orthogonal Validated** 

Key Features

Host Species

- Rabbit

Reactivity

- Human, Mouse, Rat

Applications

- WB

MW

- 105kD (Observed)

Isotype

- IgG

Storage

Storage* -15°C to -25°C/1 year (Do not lower than -25°C)

Formulation Liquid in PBS containing 50% glycerol, 0.5% BSA and 0.02% sodium azide.

Recommended Dilution Ratios

WB 1:500-2000

Basic Information

Clonality Polyclonal

Immunogen Information

Immunogen Synthesized peptide derived from human ROR1 (Phospho-Tyr786)

Specificity This antibody detects endogenous levels of ROR1 (Phospho-Tyr786) at Human, Mouse, Rat. The name of modified sites may be influenced by many factors, such as species (the modified site was not originally found in human samples) and the change of protein sequence (the previous protein sequence is incomplete, and the protein sequence may be prolonged with the development of protein sequencing technology). When naming, we will use the "numbers" in historical reference to keep the sites consistent with the reports. The antibody binds to the following modification sequence (lowercase letters are modification sites): PRyPN

Target Information

Gene name ROR1 NTRKR1

Protein Name ROR1 (Phospho-Tyr786)

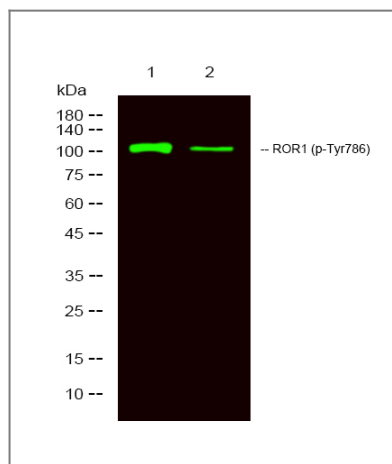
Organism	Gene ID	UniProt ID
Human	4919 ;	Q01973 ;
Mouse	26563 ;	Q9Z139 ;

Cellular Localization Membrane ; Single-pass type I membrane protein. Cell projection, axon .

Tissue specificity Expressed strongly in human heart, lung and kidney, but weakly in the CNS. Isoform Short is strongly expressed in fetal and adult CNS and in a variety of human cancers, including those originating from CNS or PNS neuroectoderm.

Function Catalytic activity:ATP + a [protein]-L-tyrosine = ADP + a [protein]-L-tyrosine phosphate.,developmental stage:Expressed at high levels during early embryonic development. The expression levels drop strongly around day 16 and there are only very low levels in adult tissues.,Function:Tyrosine-protein kinase receptor whose role is not yet clear.,similarity:Belongs to the protein kinase superfamily. Tyr protein kinase family. ROR subfamily.,similarity:Contains 1 FZ (frizzled) domain.,similarity:Contains 1 Ig-like C2-type (immunoglobulin-like) domain.,similarity:Contains 1 kringle domain.,similarity:Contains 1 protein kinase domain.,tissue specificity:Expressed strongly in human heart, lung, and kidney, but weakly in the CNS. The short isoform is strongly expressed in fetal and adult CNS and in a variety of human cancers, including those originating from CNS or PNS neuroectoderm.,

Validation Data



Western Blot analysis of 1 HeLa, 2 treated with LPS 100ng/mL 20mim, using primary antibody at 1:1000 dilution. Secondary antibody(catalog#:RS23920) was diluted at 1:10000

Contact information

Orders: order.cn@immunoway.com
Support: support.cn@immunoway.com
Telephone: 400-8787-807(China)
Website: <http://www.immunoway.com.cn>
Address: 2200 Ringwood Ave San Jose, CA 95131 USA



Please scan the QR code
to access additional
product information:
**ROR1 (Phospho
Tyr786) Rabbit pAb**

For Research Use Only. Not for Use in Diagnostic Procedures.

[Antibody](#) | [ELISA Kits](#) | [Protein](#) | [Reagents](#)