

## Connexin 43 (Phospho Ser373) Rabbit pAb

CatalogNo: YP1692 **Orthogonal Validated** 

### Key Features

#### Host Species

- Rabbit

#### Reactivity

- Human, Mouse, Rat

#### Applications

- WB

#### MW

- 43kD (Observed)

#### Isotype

- IgG

### Storage

**Storage\*** -15°C to -25°C/1 year (Do not lower than -25°C)

**Formulation** Liquid in PBS containing 50% glycerol, 0.5% BSA and 0.02% sodium azide.

### Recommended Dilution Ratios

WB 1:500-2000

### Basic Information

**Clonality** Polyclonal

### Immunogen Information

**Immunogen** Synthesized peptide derived from human Connexin 43 (Phospho-Ser373)

**Specificity** This antibody detects endogenous levels of Connexin 43 (Phospho-Ser373) at Human, Mouse, Rat. The name of modified sites may be influenced by many factors, such as species (the modified site was not originally found in human samples) and the change of protein sequence (the previous protein sequence is incomplete, and the protein sequence may be prolonged with the development of protein sequencing technology). When naming, we will use the "numbers" in historical reference to keep the sites consistent with the reports. The antibody binds to the following modification sequence (lowercase letters are modification sites): ASsRP

## Target Information

**Gene name** GJA1 GJAL

**Protein Name** Connexin 43 (Phospho-Ser373)

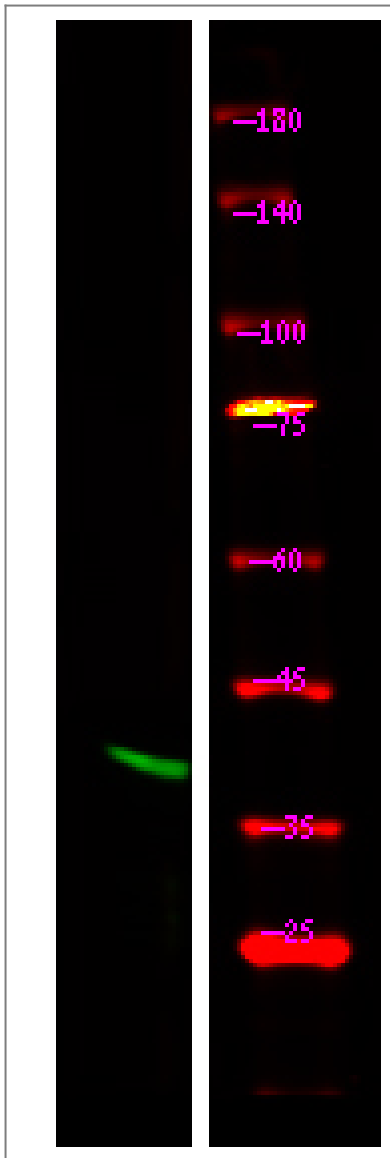
Organism	Gene ID	UniProt ID
Human	<a href="#">2697</a> ;	<a href="#">P17302</a> ;
Mouse	<a href="#">14609</a> ;	<a href="#">P23242</a> ;
Rat	<a href="#">24392</a> ;	<a href="#">P08050</a> ;

**Cellular Localization** Cell membrane ; Multi-pass membrane protein . Cell junction , gap junction . Endoplasmic reticulum . Localizes at the intercalated disk (ICD) in cardiomyocytes and the proper localization at ICD is dependent on TMEM65. .

**Tissue specificity** Expressed in the heart and fetal cochlea.

**Function** Caution:PubMed:11741837 reported 2 mutations (Phe-11 and Ala-24) linked to non-syndromic autosomal recessive deafness (DFNBG) . These mutations have subsequently been shown (PubMed:12457340) to involve the pseudogene of connexin-43 located on chromosome 5. ,Caution:PubMed:7715640 reported a mutation Pro-364 linked to congenital heart diseases. This was later shown (PubMed:8873667) to be an artifact. ,Disease:Defects in GJA1 are a cause of hypoplastic left heart syndrome (HLHS) [MIM:241550]. HLHS refers to the abnormal development of the left-sided cardiac structures , resulting in obstruction to blood flow from the left ventricular outflow tract. In addition , the syndrome includes underdevelopment of the left ventricle , aorta , and aortic arch , as well as mitral atresia or stenosis. ,Disease:Defects in GJA1 are the cause of autosomal dominant oculodentodigital dysplasia (ODDD) [MIM:164200]; also known as oculodentoosseous dysplasia. ODDD is a highly penetrant syndrome presenting with craniofacial (ocular , nasal , dental) and limb dysmorphisms , spastic paraplegia , and neurodegeneration. Craniofacial anomalies typically include a thin nose with hypoplastic alae nasi , small anteverted nares , prominent columella , and microcephaly. Brittle nails and hair abnormalities of hypotrichosis and slow growth are present. Ocular defects include microphthalmia , microcornea , cataracts , glaucoma , and optic atrophy. Syndactyly type III and conductive deafness can occur in some cases. Cardiac abnormalities are observed in rare instances. ,Disease:Defects in GJA1 may be the cause of syndactyly type III (SDTY3) [MIM:186100]. Syndactyly is an autosomal dominant trait and is the most common congenital anomaly of the hand or foot. It is marked by persistence of the webbing between adjacent digits , so they are more or less completely attached. In this type there is usually complete and bilateral syndactyly between the fourth and fifth fingers. Usually it is soft tissue syndactyly but occasionally the distal phalanges are fused. The fifth finger is short with absent or rudimentary middle phalanx. The feet are not affected. ,Function:One gap junction consists of a cluster of closely packed pairs of transmembrane channels , the connexons , through which materials of low MW diffuse from one cell to a neighboring cell. ,Function:One gap junction consists of a cluster of closely packed pairs of transmembrane channels , the connexons , through which materials of low MW diffuse from one cell to a neighboring cell. May play a critical role in the physiology of hearing by participating in the recycling of potassium to the cochlear endolymph. ,similarity:Belongs to the connexin family. ,similarity:Belongs to the connexin family. Alpha-type (group II) subfamily. ,subunit:A connexon is composed of a hexamer of connexins. ,subunit:A connexon is composed of a hexamer of connexins. Interacts with SGSM3. Interacts with KIAA1432/CIP150. ,tissue specificity:Expressed in the heart and fetal cochlea.

## Validation Data



Western Blot analysis of 1 HeLa cell, 2 Serum-free treated, using primary antibody at 1:1000 dilution. Secondary antibody (catalog#:RS23920) was diluted at 1:10000

## Contact information

Orders: [order.cn@immunoway.com](mailto:order.cn@immunoway.com)  
Support: [support.cn@immunoway.com](mailto:support.cn@immunoway.com)  
Telephone: 400-8787-807(China)  
Website: <http://www.immunoway.com.cn>  
Address: 2200 Ringwood Ave San Jose, CA 95131 USA



Please scan the QR code to access additional product information:  
**Connexin 43**  
**(Phospho Ser373)**  
**Rabbit pAb**

For Research Use Only. Not for Use in Diagnostic Procedures.

[Antibody](#) | [ELISA Kits](#) | [Protein](#) | [Reagents](#)