

## QIK/QSK (Phospho Thr175/163) Rabbit pAb

CatalogNo: YP1687 **Orthogonal Validated** 

### Key Features

#### Host Species

- Rabbit

#### Reactivity

- Human, Mouse, Rat

#### Applications

- WB

#### MW

- 105kD (Observed)

#### Isotype

- IgG

### Storage

**Storage\*** -15°C to -25°C/1 year (Do not lower than -25°C)

**Formulation** Liquid in PBS containing 50% glycerol, 0.5% BSA and 0.02% sodium azide.

### Recommended Dilution Ratios

WB 1:500-2000

### Basic Information

**Clonality** Polyclonal

### Immunogen Information

**Immunogen** Synthesized peptide derived from human QIK/QSK (Phospho-Thr175/163)

**Specificity** This antibody detects endogenous levels of QIK/QSK only when phosphorylated at Thr175 or 163, and dually phosphorylated at two sites. The name of modified sites may be influenced by many factors, such as species (the modified site was not originally found in human samples) and the change of protein sequence (the previous protein sequence is incomplete, and the protein sequence may be prolonged with the development of protein sequencing technology). When naming, we will use the "numbers" in historical reference to keep the sites consistent with the reports. The antibody binds to the following modification sequence (lowercase letters are modification sites): LA<sub>t</sub>WC

## Target Information

**Gene name** SIK2 KIAA0781 QIK SNF1LK2

**Protein Name** QIK/QSK (Phospho-Thr175/163)

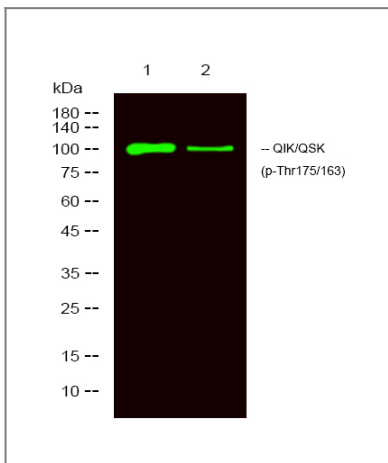
Organism	Gene ID	UniProt ID
Human	<a href="#">23235;</a>	<a href="#">Q9H0K1;</a>
Mouse	<a href="#">235344;</a>	<a href="#">Q8CFH6;</a>

**Cellular Localization** Cytoplasm . Endoplasmic reticulum membrane .

**Tissue specificity** Brain,Colon,Lung,Testis,

**Function** Catalytic activity:ATP + a protein = ADP + a phosphoprotein.,cofactor:Magnesium.,enzyme regulation:Activated by phosphorylation on Thr-175 by STK11 in complex with STE20-related adapter-alpha (STRAD alpha) pseudo kinase and CAB39.,Function:Phosphorylates 'Ser-794' of IRS1 in insulin-stimulated adipocytes, potentially modulating the efficiency of insulin signal transduction. Inhibits CREB activity by phosphorylating and repressing TORCs, the CREB-specific coactivators.,similarity:Belongs to the protein kinase superfamily. CAMK Ser/Thr protein kinase family. AMPK subfamily.,similarity:Contains 1 protein kinase domain.,similarity:Contains 1 UBA domain.,subunit:Interacts with and phosphorylates TORC2/CRTC2.,

## Validation Data



Western Blot analysis of 1 HeLa, 2 treated with LPS 100ng/mL 20mim,using primary antibody at 1:1000 dilution. Secondary antibody(catalog#:RS23920) was diluted at 1:10000

## Contact information

Orders: order.cn@immunoway.com  
Support: support.cn@immunoway.com  
Telephone: 400-8787-807(China)  
Website: <http://www.immunoway.com.cn>  
Address: 2200 Ringwood Ave San Jose, CA 95131 USA



Please scan the QR code  
to access additional  
product information:  
**QIK/QSK (Phospho  
Thr175/163) Rabbit  
pAb**

---

For Research Use Only. Not for Use in Diagnostic Procedures.

[Antibody](#) | [ELISA Kits](#) | [Protein](#) | [Reagents](#)