

## L-plastin (Phospho Ser5) Rabbit pAb

CatalogNo: YP1681 **Orthogonal Validated** 

### Key Features

#### Host Species

- Rabbit

#### Reactivity

- Human, Mouse, Rat

#### Applications

- WB

#### MW

- 69kD (Calculated)

#### Isotype

- IgG

### Storage

**Storage\*** -15°C to -25°C/1 year (Do not lower than -25°C)

**Formulation** Liquid in PBS containing 50% glycerol, 0.5% BSA and 0.02% sodium azide.

### Recommended Dilution Ratios

WB 1:500-2000

### Basic Information

**Clonality** Polyclonal

### Immunogen Information

**Immunogen** Synthesized peptide derived from human L-plastin (Phospho-Ser5)

**Specificity** This antibody detects endogenous levels of L-plastin (Phospho-Ser5) at Human, Mouse, Rat. The name of modified sites may be influenced by many factors, such as species (the modified site was not originally found in human samples) and the change of protein sequence (the previous protein sequence is incomplete, and the protein sequence may be prolonged with the development of protein sequencing technology). When naming, we will use the "numbers" in historical reference to keep the sites consistent with the reports. The antibody binds to the following modification sequence (lowercase letters are modification sites): RGSVS

## Target Information

**Gene name** LCP1 PLS2

**Protein Name** L-plastin (Phospho-Ser5)

Organism	Gene ID	UniProt ID
Human	<a href="#">3936</a> ;	<a href="#">P13796</a> ;
Mouse	<a href="#">18826</a> ;	<a href="#">Q61233</a> ;

### Cellular Localization

Cytoplasm, cytoskeleton . Cell junction . Cell projection . Cell projection, ruffle membrane ; Peripheral membrane protein ; Cytoplasmic side . Relocalizes to the immunological synapse between peripheral blood T-lymphocytes and antibody-presenting cells in response to costimulation through TCR/CD3 and CD2 or CD28 (PubMed:17294403). Associated with the actin cytoskeleton at membrane ruffles. Relocalizes to actin-rich cell projections upon serine phosphorylation (PubMed:16636079). .

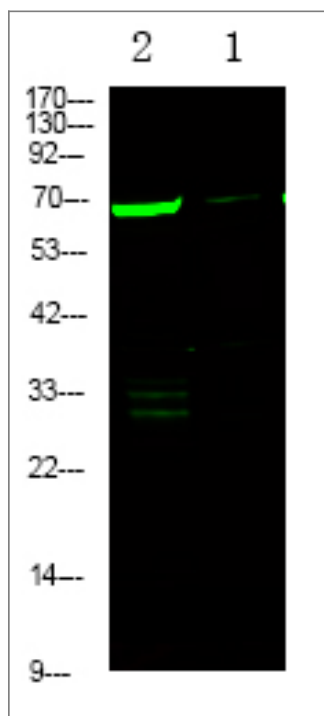
### Tissue specificity

Detected in intestinal microvilli, hair cell stereocilia, and fibroblast filopodia, in spleen and other lymph node-containing organs. Expressed in peripheral blood T-lymphocytes, neutrophils, monocytes, B-lymphocytes, and myeloid cells.

### Function

Function:Actin-binding protein found in intestinal microvilli, hair cell stereocilia, and fibroblast filopodia.,PTM:Phosphorylated.,PTM:The N-terminus is blocked.,similarity:Contains 2 actin-binding domains.,similarity:Contains 2 EF-hand domains.,similarity:Contains 4 CH (calponin-homology) domains.,subunit:Monomer.,tissue specificity:Restricted to the spleen and other lymph node-containing organs. Expressed in neutrophils, monocytes, B lymphocytes, and myeloid cells.,

## Validation Data



Western Blot analysis of 1 K562 cell, 2 LPS 100ng/mL 30min treated ,using primary antibody at 1:1000 dilution. Secondary antibody(catalog#:RS23920) was diluted at 1:10000

## | Contact information

Orders: order.cn@immunoway.com  
Support: support.cn@immunoway.com  
Telephone: 400-8787-807(China)  
Website: <http://www.immunoway.com.cn>  
Address: 2200 Ringwood Ave San Jose, CA 95131 USA



Please scan the QR code to access additional product information:  
**L-plastin (Phospho Ser5) Rabbit pAb**

---

For Research Use Only. Not for Use in Diagnostic Procedures.

[Antibody](#) | [ELISA Kits](#) | [Protein](#) | [Reagents](#)