

IRF-5 (Phospho Ser437) Rabbit pAb

CatalogNo: YP1660 **Orthogonal Validated** 

Key Features

Host Species

- Rabbit

Reactivity

- Human, Mouse, Rat

Applications

- WB

MW

- 55kD (Calculated)

Isotype

- IgG

Storage

Storage* -15°C to -25°C/1 year (Do not lower than -25°C)

Formulation Liquid in PBS containing 50% glycerol, 0.5% BSA and 0.02% sodium azide.

Recommended Dilution Ratios

WB 1:500-2000

Basic Information

Clonality Polyclonal

Immunogen Information

Immunogen Synthesized peptide derived from human IRF5 (Phospho-Ser437)

Specificity This antibody detects endogenous levels of IRF5 (Phospho-Ser437) at Human, Mouse, Rat. The name of modified sites may be influenced by many factors, such as species (the modified site was not originally found in human samples) and the change of protein sequence (the previous protein sequence is incomplete, and the protein sequence may be prolonged with the development of protein sequencing technology). When naming, we will use the "numbers" in historical reference to keep the sites consistent with the reports. The antibody binds to the following modification sequence (lowercase letters are modification sites): SWsAD

Target Information

Gene name IRF5

Protein Name IRF5 (Phospho-Ser437)

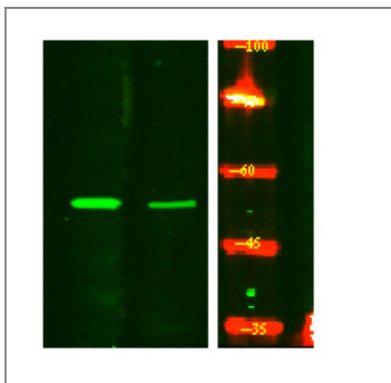
Organism	Gene ID	UniProt ID
Human	3663 ;	Q13568 ;
Mouse	27056 ;	P56477 ;

Cellular Localization Cytoplasm . Nucleus . Shuttles between the nucleus and the cytoplasm: upon activation by the TLR adapter MYD88 and subsequent phosphorylation, translocates to the nucleus. .

Tissue specificity Kidney,

Function Disease:Genetic variations in IRF5 are associated with susceptibility to inflammatory bowel disease type 14 (IBD14) [MIM:612245]. Inflammatory bowel disease (IBD) is a form of remitting Crohn disease (CD). CD may involve any part of the gastrointestinal tract, but most frequently the terminal ileum and colon. Bowel inflammation is transmural and discontinuous. CD is commonly classified as an autoimmune disease.,Disease:Genetic variations in IRF5 are associated with susceptibility to rheumatoid arthritis (RA) [MIM:180300]. Rheumatoid arthritis is a complex, multifactorial disorder. It is one of the most common autoimmune diseases and it is characterized by inflammation of synovial tissue and joint destruction.,Disease:Genetic variations in IRF5 are associated with susceptibility to systemic lupus erythematosus type 10 (SLEB10) [MIM:612251]. Systemic lupus erythematosus (SLE) is a chronic, inflammatory and often febrile multisystemic disorder of connective tissue. It affects principally the skin, joints, kidneys and serosal membranes. It is thought to represent a failure of the regulatory mechanisms of the autoimmune system.,similarity:Belongs to the IRF family.,similarity:Contains 1 tryptophan pentad repeat DNA-binding domain.,

Validation Data



Western Blot analysis of HeLa treated or untreated by LPS lysis, using primary antibody at 1:1000 dilution. Secondary antibody(catalog#:RS23920) was diluted at 1:10000

Contact information

Orders: order.cn@immunoway.com
Support: support.cn@immunoway.com
Telephone: 400-8787-807(China)
Website: <http://www.immunoway.com.cn>
Address: 2200 Ringwood Ave San Jose, CA 95131 USA



Please scan the QR code
to access additional
product information:
**IRF-5 (Phospho
Ser437) Rabbit pAb**

For Research Use Only. Not for Use in Diagnostic Procedures.

[Antibody](#) | [ELISA Kits](#) | [Protein](#) | [Reagents](#)