

Calpain 2 (Phospho Ser50) Rabbit pAb

CatalogNo: YP1593 **Orthogonal Validated** 

Key Features

Host Species

- Rabbit

Reactivity

- Human, Mouse, Rat

Applications

- WB, ELISA

MW

- 69kD (Observed)

Isotype

- IgG

Storage

Storage* -15°C to -25°C/1 year (Do not lower than -25°C)

Formulation Liquid in PBS containing 50% glycerol, 0.5% BSA and 0.02% sodium azide.

Recommended Dilution Ratios

WB 1:1000-2000

ELISA 1:5000-20000

Basic Information

Clonality Polyclonal

Immunogen Information

Immunogen Synthesized peptide derived from human Calpain 2 (Phospho Ser50)

Specificity This antibody detects endogenous levels of Human, Mouse, Rat Calpain 2 (Phospho Ser50). The name of modified sites may be influenced by many factors, such as species (the modified site was not originally found in human samples) and the change of protein sequence (the previous protein sequence is incomplete, and the protein sequence may be prolonged with the development of protein sequencing technology). When naming, we will use the "numbers" in historical reference to keep the sites consistent with the reports. The antibody binds to the following modification sequence (lowercase letters are modification sites): DPSPF

Target Information

Gene name CAPN2 CANPL2

Protein Name Calpain-2 catalytic subunit (Phospho Ser50)

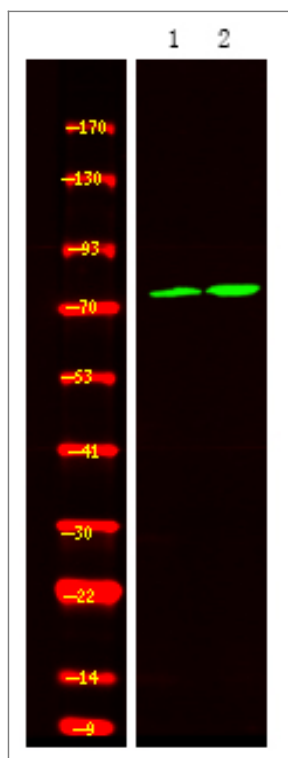
Organism	Gene ID	UniProt ID
Human	824;	P17655;
Mouse	12334;	O08529;
Rat	29154;	Q07009;

Cellular Localization Cytoplasm. Cell membrane. Translocates to the plasma membrane upon Ca(2+) binding.

Tissue specificity Ubiquitous.

Function Catalytic activity:Broad endopeptidase specificity.,cofactor:Binds 3 calcium ions.,enzyme regulation:Activated by 200-1000 micromolar concentrations of calcium and inhibited by calpastatin.,Function:Calcium-regulated non-lysosomal thiol-protease which catalyze limited proteolysis of substrates involved in cytoskeletal remodeling and signal transduction.,sequence Caution:Contaminating sequence. Potential poly-A sequence.,similarity:Belongs to the peptidase C2 family.,similarity:Contains 1 calpain catalytic domain.,similarity:Contains 3 EF-hand domains.,subcellular location:Translocates to the plasma membrane upon Ca(2+) binding.,subunit:Forms a heterodimer with a small (regulatory) subunit (CAPNS1).,tissue specificity:Ubiquitous.,

Validation Data



Western Blot analysis of 1 A549 cell 2 LPS 100ng/mL 30min treated ,using primary antibody at 1:1000 dilution. Secondary antibody(catalog#:RS23920) was diluted at 1:10000

| Contact information

Orders: order.cn@immunoway.com
Support: support.cn@immunoway.com
Telephone: 400-8787-807(China)
Website: <http://www.immunoway.com.cn>
Address: 2200 Ringwood Ave San Jose, CA 95131 USA



Please scan the QR code to access additional product information:
Calpain 2 (Phospho Ser50) Rabbit pAb

For Research Use Only. Not for Use in Diagnostic Procedures.

[Antibody](#) | [ELISA Kits](#) | [Protein](#) | [Reagents](#)