

Kinesin-like Protein KIF1C (Phospho Ser1092) Rabbit pAb

CatalogNo: YP1584

Key Features

Host Species

- Rabbit

Reactivity

- Human,Mouse,Rat

Applications

- WB,IHC

MW

- 121kD (Observed)

Isotype

- IgG

Storage

Storage* -15°C to -25°C/1 year(Do not lower than -25°C)

Formulation Liquid in PBS containing 50% glycerol, 0.5% BSA and 0.02% sodium azide.

Recommended Dilution Ratios

WB 1:500-2000

IHC 1:50-300

Basic Information

Clonality Polyclonal

Immunogen Information

Immunogen Synthesized peptide derived from human Kinesin-like Protein KIF1C (Phospho Ser1092)

Specificity This antibody detects endogenous levels of Human,Mouse,Rat Kinesin-like Protein KIF1C (Phospho Ser1092).The name of modified sites may be influenced by many factors, such as species (the modified site was not originally found in human samples) and the change of protein sequence (the previous protein sequence is incomplete, and the protein sequence may be prolonged with the development of protein sequencing technology). When naming, we will use the "numbers" in historical reference to keep the sites consistent with the reports. The antibody binds to the following modification sequence (lowercase letters are modification sites):QRsAP

Target Information

Gene name KIF1C KIAA0706

Protein Name Kinesin-like Protein KIF1C (Phospho Ser1092)

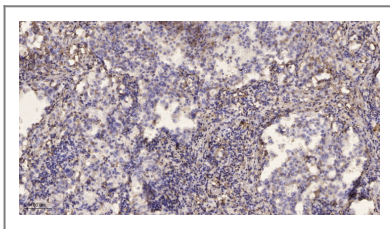
Organism	Gene ID	UniProt ID
Human	10749;	O43896;
Mouse	16562;	O35071;
Rat	113886;	O35787;

Cellular Localization Cytoplasm, cytoskeleton .

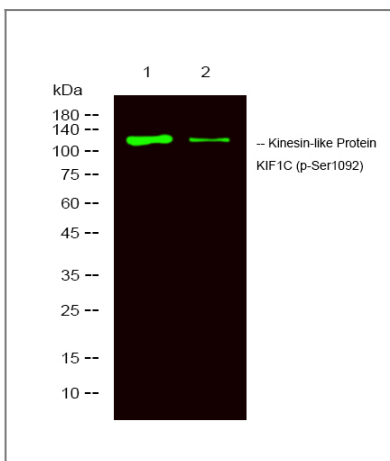
Tissue specificity Expressed in all tissues examined, with most abundant expression in heart and skeletal muscle.

Function Function:Motor required for the retrograde transport of Golgi vesicles to the endoplasmic reticulum. Has a microtubule plus end-directed motility.,PTM:Phosphorylated on tyrosine residues.,similarity:Belongs to the kinesin-like protein family. Unc-104 subfamily.,similarity:Contains 1 FHA domain.,similarity:Contains 1 kinesin-motor domain.,subunit:Monomer .,tissue specificity:Expressed in all tissues examined, with most abundant expression in heart and skeletal muscle.,

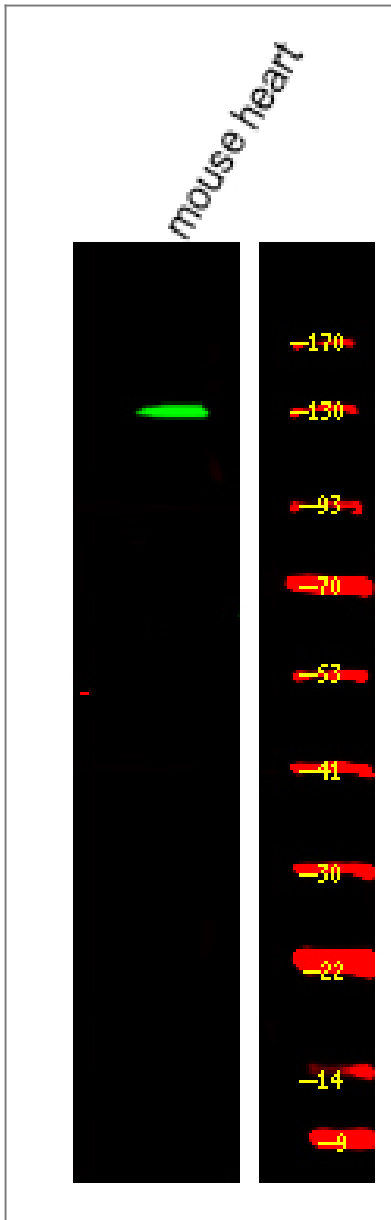
Validation Data



Immunohistochemical analysis of paraffin-embedded human lung cancer. 1, Antibody was diluted at 1:200(4° overnight). 2, Tris-EDTA,pH9.0 was used for antigen retrieval. 3,Secondary antibody was diluted at 1:200(room temperature, 45min).



Western Blot analysis of mouse heart, rat heart, using primary antibody at 1:1000 dilution. Secondary antibody(catalog#:RS23920) was diluted at 1:10000



Western Blot analysis of various,using primary antibody at 1:1000 dilution.
Secondary antibody(catalog#:RS23920) was diluted at 1:10000

Contact information

Orders: order.cn@immunoway.com
Support: support.cn@immunoway.com
Telephone: 400-8787-807(China)
Website: <http://www.immunoway.com.cn>
Address: 2200 Ringwood Ave San Jose, CA 95131 USA



Please scan the QR code
to access additional
product information:
**Kinesin-like Protein
KIF1C (Phospho
Ser1092) Rabbit
pAb**