

CTIP (Phospho Ser327) Rabbit pAb

CatalogNo: YP1560 **Orthogonal Validated** 

Key Features

Host Species

- Rabbit

Reactivity

- Human, Mouse

Applications

- WB, ELISA

MW

- 100kD (Observed)

Isotype

- IgG

Storage

Storage* -15°C to -25°C/1 year (Do not lower than -25°C)

Formulation Liquid in PBS containing 50% glycerol, 0.5% BSA and 0.02% sodium azide.

Recommended Dilution Ratios

WB 1:1000-2000

ELISA 1:5000-20000

Basic Information

Clonality Polyclonal

Immunogen Information

Immunogen Synthesized peptide derived from human CTIP (Phospho Ser327)

Specificity This antibody detects endogenous levels of Human, Mouse CTIP (Phospho Ser327). The name of modified sites may be influenced by many factors, such as species (the modified site was not originally found in human samples) and the change of protein sequence (the previous protein sequence is incomplete, and the protein sequence may be prolonged with the development of protein sequencing technology). When naming, we will use the "numbers" in historical reference to keep the sites consistent with the reports. The antibody binds to the following modification sequence (lowercase letters are modification sites): VSsPV

Target Information

Gene name RBBP8 CTIP

Protein Name CTIP (Phospho Ser327)

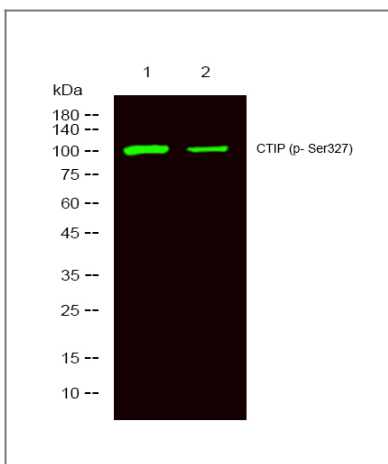
Organism	Gene ID	UniProt ID
Human	5932;	Q99708;
Mouse	225182;	Q80YR6;
Rat	291787;	B1WC58;

Cellular Localization Nucleus . Chromosome . Associates with sites of DNA damage in S/G2 phase (PubMed:10764811, PubMed:25349192). Ubiquitinated RBBP8 binds to chromatin following DNA damage (PubMed:16818604). .

Tissue specificity Expressed in ER-positive breast cancer lines, but tends to be down-regulated ER-negative cells (at protein level).

Function Function:May modulate the functions ascribed to BRCA1 in transcriptional regulation, DNA repair, and/or cell cycle checkpoint control.,PTM:Phosphorylated upon DNA damage, probably by ATM or ATR. Hyperphosphorylation upon ionizing radiation results in dissociation from BRCA1.,PTM:Ubiquitinated; mediated by SIAH1 and leading to its subsequent proteasomal degradation.,subcellular location:Predominantly nuclear.,subunit:Interacts with CTBP, with the C-terminal (BRCT) domains of BRCA1, and with the retinoblastoma protein.,

Validation Data



Western Blot analysis of 1 A431 treated with LPS, 2 A431, using primary antibody at 1:1000 dilution. Secondary antibody (catalog#:RS23920) was diluted at 1:10000

Contact information

Orders: order.cn@immunoway.com
Support: support.cn@immunoway.com
Telephone: 400-8787-807(China)
Website: http://www.immunoway.com.cn
Address: 2200 Ringwood Ave San Jose, CA 95131 USA



Please scan the QR code
to access additional
product information:
**CTIP (Phospho
Ser327) Rabbit pAb**

For Research Use Only. Not for Use in Diagnostic Procedures.

[Antibody](#) | [ELISA Kits](#) | [Protein](#) | [Reagents](#)