

YB1 (Phospho Ser102) Rabbit pAb

CatalogNo: YP1555

Key Features

Host Species

- Rabbit

Reactivity

- Human, Mouse

Applications

- WB

MW

- 30kD (Observed)

Isotype

- IgG

Storage

Storage* -15°C to -25°C/1 year (Do not lower than -25°C)

Formulation Liquid in PBS containing 50% glycerol, 0.5% BSA and 0.02% sodium azide.

Recommended Dilution Ratios

WB 1:1000-2000

Basic Information

Clonality Polyclonal

Immunogen Information

Immunogen Synthesized phospho peptide around human YB1 (Ser102)

Specificity This antibody detects endogenous levels of Human Mouse YB1 (phospho-Ser102)

Target Information

Gene name TPSAB1 TPS1 TPS2 TPSB1

Protein Name

YB1 (Ser102)

Organism	Gene ID	UniProt ID
Human	7177 ;	Q15661 ;
Mouse	100503895 ;	Q02844 ;
Rat	54271 ;	P27435 ;

Cellular Localization

Secreted. Released from the secretory granules upon mast cell activation. .

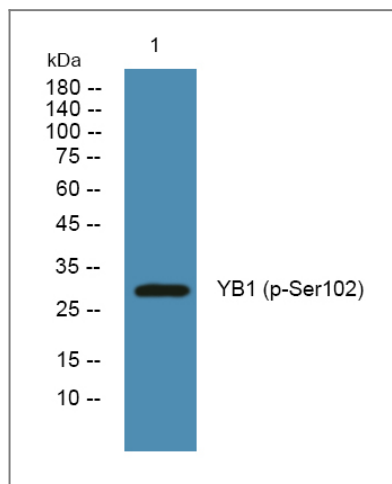
Tissue specificity

Isoform 1 and isoform 2 are expressed in lung , stomach , spleen , heart and skin; in these tissues , isoform 1 is predominant. Isoform 2 is expressed in aorta , spleen , and breast tumor , with highest levels in the endothelial cells of some blood vessels surrounding the aorta , as well as those surrounding the tumor and low levels , if any , in mast cells (at protein level) .

Function

Catalytic activity:Preferential cleavage: Arg-|-Xaa , Lys-|-Xaa , but with more restricted specificity than trypsin. ,Function:Tryptase is the major neutral protease present in mast cells and is secreted upon the coupled activation-degranulation response of this cell type. ,Function:Tryptase is the major neutral protease present in mast cells and is secreted upon the coupled activation-degranulation response of this cell type. Has an immunoprotective role during bacterial infection. Required to efficiently combat K.pneumoniae infection. ,polymorphism:There are two alleles; beta-II and beta-III which differ by 3 residues. ,similarity:Belongs to the peptidase S1 family. ,similarity:Belongs to the peptidase S1 family. Tryptase subfamily. ,similarity:Contains 1 peptidase S1 domain. ,subcellular location:Released from the secretory granules upon mast cell activation. ,subunit:Homotetramer. ,

Validation Data



Western blot analysis of lysates from SW480 cells, primary antibody was diluted at 1:1000, 4°C over night

Contact information

Orders: order.cn@immunoway.com
Support: support.cn@immunoway.com
Telephone: 400-8787-807(China)
Website: http://www.immunoway.com.cn
Address: 2200 Ringwood Ave San Jose, CA 95131 USA



Please scan the QR code
to access additional
product information:
**YB1 (Phospho
Ser102) Rabbit pAb**

For Research Use Only. Not for Use in Diagnostic Procedures.

[Antibody](#) | [ELISA Kits](#) | [Protein](#) | [Reagents](#)