

TCTP (Phospho Ser46) Rabbit pAb

CatalogNo: YP1528

Key Features

Host Species

- Rabbit

Reactivity

- Human, Mouse, Rat

Applications

- WB

MW

- 24kD (Observed)

Isotype

- IgG

Storage

Storage* -15°C to -25°C/1 year (Do not lower than -25°C)

Formulation Liquid in PBS containing 50% glycerol, 0.5% BSA and 0.02% sodium azide.

Recommended Dilution Ratios

WB 1:1000-2000

Basic Information

Clonality Polyclonal

Immunogen Information

Immunogen Synthesized phospho peptide around human TCTP (Ser46)

Specificity This antibody detects endogenous levels of Human Mouse Rat TCTP (phospho-Ser46). The name of modified sites may be influenced by many factors, such as species (the modified site was not originally found in human samples) and the change of protein sequence (the previous protein sequence is incomplete, and the protein sequence may be prolonged with the development of protein sequencing technology). When naming, we will use the "numbers" in historical reference to keep the sites consistent with the reports. The antibody binds to the following modification sequence (lowercase letters are modification sites): DDsLI

Target Information

Gene name TPT1
Protein Name Translationally-controlled tumor protein (Ser46)

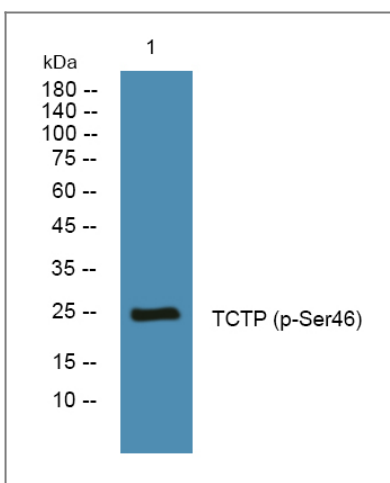
Organism	Gene ID	UniProt ID
Human	7178;	P13693;
Mouse	22070;	P63028;
Rat	116646;	P63029;

Cellular Localization Cytoplasm .

Tissue specificity Found in several healthy and tumoral cells including erythrocytes , hepatocytes , macrophages , platelets , keratinocytes , erythroleukemia cells , gliomas , melanomas , hepatoblastomas , and lymphomas. It cannot be detected in kidney and renal cell carcinoma (RCC) . Expressed in placenta and prostate.

Function Function:Involved in calcium binding and microtubule stabilization. ,similarity:Belongs to the TCTP family. ,subunit:Interacts with STEAP3. ,tissue specificity:Found in several healthy and tumoral cells including erythrocytes , hepatocytes , macrophages , platelets , keratinocytes , erythroleukemia cells , gliomas , melanomas , hepatoblastomas , and lymphomas. It cannot be detected in kidney and renal cell carcinoma (RCC) . Expressed in placenta and prostate. ,

Validation Data



Western blot analysis of lysates from KB cells, primary antibody was diluted at 1:1000, 4°C over night

Contact information

Orders: order.cn@immunoway.com
Support: support.cn@immunoway.com
Telephone: 400-8787-807(China)
Website: http://www.immunoway.com.cn
Address: 2200 Ringwood Ave San Jose, CA 95131 USA



Please scan the QR code
to access additional
product information:
**TCTP (Phospho
Ser46) Rabbit pAb**

For Research Use Only. Not for Use in Diagnostic Procedures.

[Antibody](#) | [ELISA Kits](#) | [Protein](#) | [Reagents](#)