

STAT5B (Phospho Tyr694) Rabbit pAb

CatalogNo: YP1515

Key Features

Host Species

- Rabbit

Reactivity

- Human, Mouse

Applications

- WB, IHC

MW

- 90kD (Observed)

Isotype

- IgG

Storage

Storage* -15°C to -25°C/1 year (Do not lower than -25°C)

Formulation Liquid in PBS containing 50% glycerol, 0.5% BSA and 0.02% sodium azide.

Recommended Dilution Ratios

WB 1:500-2000

IHC 1:50-300

Basic Information

Clonality Polyclonal

Immunogen Information

Immunogen Synthesized phospho peptide around human Stat5 (Tyr694)

Specificity This antibody detects endogenous levels of Human Mouse Stat5 (phospho-Tyr694)

Target Information

Gene name STAT5B

Protein Name Signal transducer and activator of transcription 5B (Tyr694)

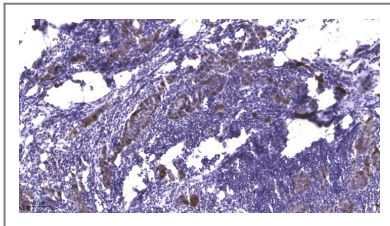
Organism	Gene ID	UniProt ID
Human	6777;	P51692;
Mouse	20851;	P42232;
Rat	25126;	P52632;

Cellular Localization Cytoplasm . Nucleus . Translocated into the nucleus in response to phosphorylation. .

Tissue specificity Brain ,Epithelium ,Lymph ,Placenta ,

Function Disease:Defects in STAT5B are the cause of Laron type dwarfism II (LTD2) [MIM:245590]; also known as Laron syndrome type II or Laron syndrome due to a post-receptor defect. The phenotypic features are consistent with growth hormone deficiency in the presence of normal to elevated circulating concentrations of growth hormone , and resistance to hexogeneous hormone therapy. ,Function:Carries out a dual Function: signal transduction and activation of transcription. Binds to the GAS element and activates PRL-induced transcription. ,online information:STAT5 entry ,online information:STAT5B mutation db ,PTM:Tyrosine phosphorylated. ,similarity:Belongs to the transcription factor STAT family. ,similarity:Contains 1 SH2 domain. ,subcellular location:Translocated into the nucleus in response to phosphorylation. ,subunit:Forms a homodimer or a heterodimer with a related family member. Binds NR3C1 (By similarity) . Interacts with NCOA1 , NMI and SOCS7. ,

Validation Data



Immunohistochemical analysis of paraffin-embedded human Breast cancer. 1, Antibody was diluted at 1:200 (4°C overnight). 2, Tris-EDTA,pH9.0 was used for antigen retrieval. 3,Secondary antibody was diluted at 1:200 (room temperature, 45min).

Contact information

Orders: order.cn@immunoway.com
Support: support.cn@immunoway.com
Telephone: 400-8787-807(China)
Website: <http://www.immunoway.com.cn>
Address: 2200 Ringwood Ave San Jose, CA 95131 USA



Please scan the QR code to access additional product information:
STAT5B (Phospho Tyr694) Rabbit pAb