

## SGTA (Phospho Ser305) Rabbit pAb

CatalogNo: YP1487

### Key Features

#### Host Species

- Rabbit

#### Reactivity

- Human, Mouse, Rat

#### Applications

- WB, ELISA, IHC

#### MW

- 35kD (Observed)

#### Isotype

- IgG

### Storage

**Storage\*** -15°C to -25°C/1 year (Do not lower than -25°C)

**Formulation** Liquid in PBS containing 50% glycerol, 0.5% BSA and 0.02% sodium azide.

### Recommended Dilution Ratios

**WB 1:500-2000**

**IHC 1:50-300**

**ELISA 1:2000-20000**

### Basic Information

**Clonality** Polyclonal

### Immunogen Information

**Immunogen** Synthesized phospho peptide around human SGTA (Ser305)

**Specificity** This antibody detects endogenous levels of Human SGTA (phospho-Ser305)

### Target Information

**Gene name** SGTA SGT SGT1

**Protein Name** SGTA (Ser305)

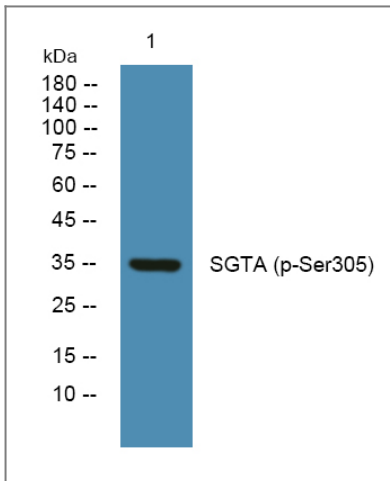
Organism	Gene ID	UniProt ID
Human	<a href="#">6449;</a>	<a href="#">O43765;</a>
Mouse	<a href="#">52551;</a>	<a href="#">Q8BJU0;</a>
Rat	<a href="#">64667;</a>	<a href="#">O70593;</a>

**Cellular Localization**

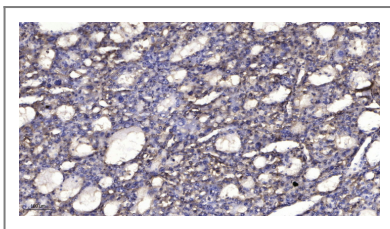
Cytoplasm . Nucleus . Co-localizes with HSP90AB1 in the cytoplasm. Increased nuclear accumulation seen during cell apoptosis. .

**Tissue specificity** Ubiquitous.

## Validation Data



Western blot analysis of lysates from K562 cells, primary antibody was diluted at 1:1000, 4° over night



Immunohistochemical analysis of paraffin-embedded human liver cancer. 1, Antibody was diluted at 1:200(4° overnight). 2, Tris-EDTA,pH9.0 was used for antigen retrieval. 3,Secondary antibody was diluted at 1:200(room temperature, 45min).

## Contact information

Orders: [order.cn@immunoway.com](mailto:order.cn@immunoway.com)  
Support: [support.cn@immunoway.com](mailto:support.cn@immunoway.com)  
Telephone: 400-8787-807(China)  
Website: <http://www.immunoway.com.cn>  
Address: 2200 Ringwood Ave San Jose, CA 95131 USA



Please scan the QR code to access additional product information:  
**SGTA (Phospho Ser305) Rabbit pAb**

