

## SEK1/MKK4 (Phospho Ser80) Rabbit pAb

CatalogNo: YP1482

### Key Features

#### Host Species

- Rabbit

#### Reactivity

- Human, Mouse, Rat

#### Applications

- WB, IHC

#### MW

- 44kD (Observed)

#### Isotype

- IgG

### Storage

**Storage\*** -15°C to -25°C/1 year (Do not lower than -25°C)

**Formulation** Liquid in PBS containing 50% glycerol, 0.5% BSA and 0.02% sodium azide.

### Recommended Dilution Ratios

**WB 1:500-2000**

**IHC 1:50-300**

### Basic Information

**Clonality** Polyclonal

### Immunogen Information

**Immunogen** Synthesized phospho peptide around human SEK1 (Ser80)

**Specificity** This antibody detects endogenous levels of Human Mouse Rat SEK1/MKK4 (phospho-Ser80). The name of modified sites may be influenced by many factors, such as species (the modified site was not originally found in human samples) and the change of protein sequence (the previous protein sequence is incomplete, and the protein sequence may be prolonged with the development of protein sequencing technology). When naming, we will use the "numbers" in historical reference to keep the sites consistent with the reports. The antibody binds to the following modification sequence (lowercase letters are modification sites): THsIE

## Target Information

**Gene name** MAP2K4 JNKK1 MEK4 MKK4 PRKMK4 SEK1 SERK1 SKK1

**Protein Name** SEK1/MKK4 (Ser80)

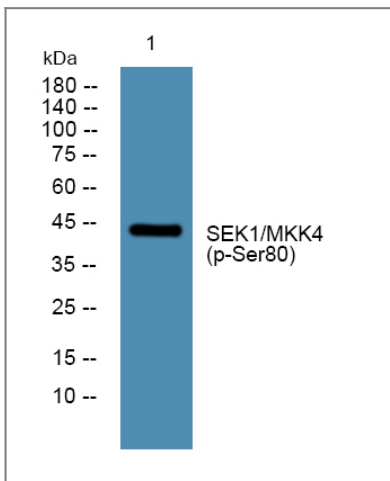
Organism	Gene ID	UniProt ID
Human	<a href="#">6416</a> ;	<a href="#">P45985</a> ;
Mouse	<a href="#">26398</a> ;	<a href="#">P47809</a> ;

**Cellular Localization** Cytoplasm . Nucleus .

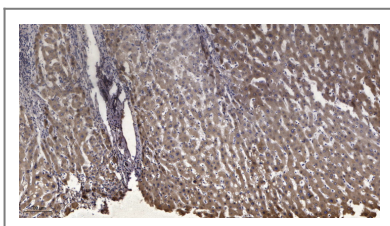
**Tissue specificity** Abundant expression is seen in the skeletal muscle. It is also widely expressed in other tissues.

**Function** Catalytic activity:ATP + a protein = ADP + a phosphoprotein.,Function: Dual specificity kinase that activates the JUN kinases MAPK8 (JNK1) and MAPK9 (JNK2) as well as MAPK14 (p38) but not MAPK1 (ERK2) or MAPK3 (ERK1).,PTM: Activated by phosphorylation on Ser/Thr by MAP kinase kinase kinases.,similarity: Belongs to the protein kinase superfamily.,similarity: Belongs to the protein kinase superfamily. STE Ser/Thr protein kinase family. MAP kinase kinase subfamily.,similarity: Contains 1 protein kinase domain.,subunit: Interacts with SPAG9.,tissue specificity: Abundant expression is seen in the skeletal muscle. It is also widely expressed in other tissues.,

## Validation Data



Western blot analysis of lysates from Jurkat cells, primary antibody was diluted at 1:1000, 4° over night



Immunohistochemical analysis of paraffin-embedded human liver cancer. 1, Antibody was diluted at 1:200(4° overnight). 2, Tris-EDTA,pH9.0 was used for antigen retrieval. 3,Secondary antibody was diluted at 1:200(room temperature, 45min).

## | Contact information

Orders: order.cn@immunoway.com  
Support: support.cn@immunoway.com  
Telephone: 400-8787-807(China)  
Website: <http://www.immunoway.com.cn>  
Address: 2200 Ringwood Ave San Jose, CA 95131 USA



Please scan the QR code  
to access additional  
product information:  
**SEK1/MKK4**  
**(Phospho Ser80)**  
**Rabbit pAb**

---

For Research Use Only. Not for Use in Diagnostic Procedures.

[Antibody](#) | [ELISA Kits](#) | [Protein](#) | [Reagents](#)