

MEK4 (Phospho Ser257) Rabbit pAb

CatalogNo: YP1480

Key Features

Host Species

- Rabbit

Reactivity

- Human, Mouse, Rat

Applications

- WB, IHC, IF, ELISA

MW

- 44kD (Calculated)

Isotype

- IgG

Storage

Storage* -15°C to -25°C/1 year (Do not lower than -25°C)

Formulation Liquid in PBS containing 50% glycerol, 0.5% BSA and 0.02% sodium azide.

Recommended Dilution Ratios

IHC 1:100-1:300

WB 1:1000-1:5000

ELISA 1:40000

IF 1:50-200

Basic Information

Clonality Polyclonal

Immunogen Information

Immunogen The antiserum was produced against synthesized peptide derived from human SEK1/MKK4/JNKK1 around the phosphorylation site of Ser257. AA range: 223-272

Specificity

Phospho-MEK-4 (S257) Polyclonal Antibody detects endogenous levels of MEK-4 protein only when phosphorylated at S257. The name of modified sites may be influenced by many factors, such as species (the modified site was not originally found in human samples) and the change of protein sequence (the previous protein sequence is incomplete, and the protein sequence may be prolonged with the development of protein sequencing technology). When naming, we will use the "numbers" in historical reference to keep the sites consistent with the reports. The antibody binds to the following modification sequence (lowercase letters are modification sites):VDsIA

| Target Information

Gene name MAP2K4 JNKK1 MEK4 MKK4 PRKMK4 SEK1 SERK1 SKK1

Protein Name Dual specificity mitogen-activated protein kinase kinase 4

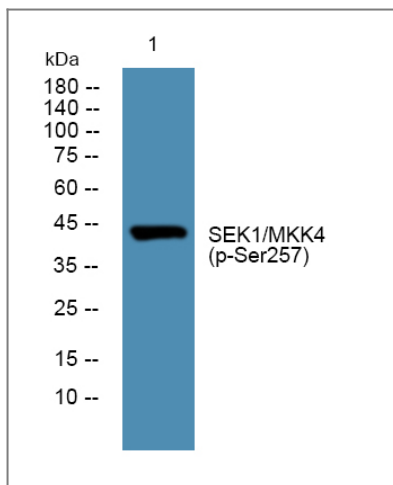
Organism	Gene ID	UniProt ID
Human	6416;	P45985;
Mouse	26398;	P47809;

Cellular Localization Cytoplasm . Nucleus .

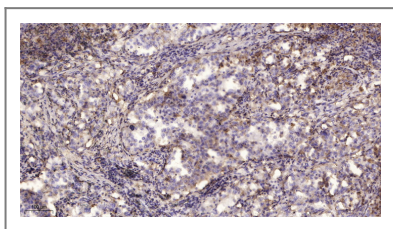
Tissue specificity Abundant expression is seen in the skeletal muscle. It is also widely expressed in other tissues.

Function Catalytic activity:ATP + a protein = ADP + a phosphoprotein.,Function: Dual specificity kinase that activates the JUN kinases MAPK8 (JNK1) and MAPK9 (JNK2) as well as MAPK14 (p38) but not MAPK1 (ERK2) or MAPK3 (ERK1).,PTM: Activated by phosphorylation on Ser/Thr by MAP kinase kinase kinases.,similarity: Belongs to the protein kinase superfamily.,similarity: Belongs to the protein kinase superfamily. STE Ser/Thr protein kinase family. MAP kinase kinase subfamily.,similarity: Contains 1 protein kinase domain.,subunit: Interacts with SPAG9.,tissue specificity: Abundant expression is seen in the skeletal muscle. It is also widely expressed in other tissues.,

| Validation Data



Western blot analysis of lysates from DU145 cells, primary antibody was diluted at 1:1000, 4° overnight



Immunohistochemical analysis of paraffin-embedded human lung cancer. 1, Antibody was diluted at 1:200(4° overnight). 2, Tris-EDTA,pH9.0 was used for antigen retrieval. 3,Secondary antibody was diluted at 1:200(room temperature, 45min).

Contact information

Orders: order.cn@immunoway.com
 Support: support.cn@immunoway.com
 Telephone: 400-8787-807(China)
 Website: <http://www.immunoway.com.cn>
 Address: 2200 Ringwood Ave San Jose, CA 95131 USA



Please scan the QR code to access additional product information:
MEK4 (Phospho Ser257) Rabbit pAb

For Research Use Only. Not for Use in Diagnostic Procedures.

[Antibody](#) | [ELISA Kits](#) | [Protein](#) | [Reagents](#)