

SCRIB (Phospho Ser1220) Rabbit pAb

CatalogNo: YP1479

Key Features

Host Species

- Rabbit

Reactivity

- Human, Mouse

Applications

- WB, ELISA, IHC

MW

- 179kD (Observed)

Isotype

- IgG

Storage

Storage* -15°C to -25°C/1 year (Do not lower than -25°C)

Formulation Liquid in PBS containing 50% glycerol, 0.5% BSA and 0.02% sodium azide.

Recommended Dilution Ratios

WB 1:500-2000

IHC 1:50-300

ELISA 1:2000-20000

Basic Information

Clonality Polyclonal

Immunogen Information

Immunogen Synthesized phospho peptide around human Scribble (Ser1220)

Specificity This antibody detects endogenous levels of Human Mouse Scribble (phospho-Ser1220)

Target Information

Gene name SCRIB CRIB1 KIAA0147 LAP4 SCRIB1 VARTUL

Protein Name Protein scribble homolog

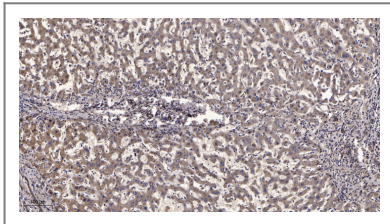
Organism	Gene ID	UniProt ID
Human	23513 ;	Q14160 ;
Mouse	105782 ;	Q80U72 ;

Cellular Localization Cell membrane ; Peripheral membrane protein. Cell junction . Cell junction, adherens junction. Cell projection, lamellipodium. Cytoplasm. Cell junction, synapse, postsynapse . Cell junction, synapse, presynapse . Targeting to cell-cell junctions which is CDH1-dependent is required for the pro-apoptotic activity. In a subset of CD4+ T-cells, colocalizes with CRTAM at the immunological synapse during the late phase of T-cell activation (By similarity). .

Tissue specificity Expressed in kidney, skeletal muscles, liver, lung, breast, intestine, placenta and skin mainly in epithelial cells (at protein level).

Function similarity:Contains 4 PDZ (DHR) domains.,

Validation Data



Immunohistochemical analysis of paraffin-embedded human liver cancer. 1, Antibody was diluted at 1:200(4° overnight). 2, Tris-EDTA,pH9.0 was used for antigen retrieval. 3,Secondary antibody was diluted at 1:200(room temperature, 45min).

Contact information

Orders: order.cn@immunoway.com
Support: support.cn@immunoway.com
Telephone: 400-8787-807(China)
Website: <http://www.immunoway.com.cn>
Address: 2200 Ringwood Ave San Jose, CA 95131 USA



Please scan the QR code to access additional product information:
SCRIB (Phospho Ser1220) Rabbit pAb

For Research Use Only. Not for Use in Diagnostic Procedures.

[Antibody](#) | [ELISA Kits](#) | [Protein](#) | [Reagents](#)