

SATB1 (Phospho Ser47) Rabbit pAb

CatalogNo: YP1478

Key Features

Host Species

- Rabbit

Reactivity

- Human,Mouse,Rat

Applications

- WB,ELISA,IHC

MW

- 85kD (Observed)

Isotype

- IgG

Storage

Storage* -15°C to -25°C/1 year(Do not lower than -25°C)

Formulation Liquid in PBS containing 50% glycerol, 0.5% BSA and 0.02% sodium azide.

Recommended Dilution Ratios

WB 1:500-2000

IHC 1:50-300

ELISA 1:2000-20000

Basic Information

Clonality Polyclonal

Immunogen Information

Immunogen Synthesized phospho peptide around human SATB1 (Ser47)

Specificity This antibody detects endogenous levels of Human Mouse Rat SATB1 (phospho-Ser47)

Target Information

Gene name SATB1

Protein Name SATB1 (Ser47)

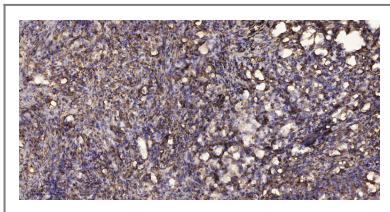
Organism	Gene ID	UniProt ID
Human	6304;	Q01826;
Mouse	20230;	Q60611;

Cellular Localization Nucleus matrix . Nucleus, PML body . Organized into a cage-like network anchoring loops of heterochromatin and tethering specialized DNA sequences (PubMed:12692553). When sumoylated, localized in promyelocytic leukemia nuclear bodies (PML NBs) (PubMed:18408014). .

Tissue specificity Expressed predominantly in thymus.

Function Function: Binds to DNA at special AT-rich sequences at nuclear matrix- or scaffold-associated regions. Thought to recognize the sugar-phosphate structure of double-stranded DNA.,PTM: Sumoylated.,similarity: Belongs to the CUT homeobox family.,similarity: Contains 1 homeobox DNA-binding domain.,similarity: Contains 2 CUT DNA-binding domains.,tissue specificity: Expressed predominantly in thymus.,

Validation Data



Immunohistochemical analysis of paraffin-embedded human Squamous cell carcinoma of lung. 1, Antibody was diluted at 1:200(4° overnight). 2, Tris-EDTA,pH9.0 was used for antigen retrieval. 3,Secondary antibody was diluted at 1:200(room temperature, 45min).

Contact information

Orders: order.cn@immunoway.com
Support: support.cn@immunoway.com
Telephone: 400-8787-807(China)
Website: <http://www.immunoway.com.cn>
Address: 2200 Ringwood Ave San Jose, CA 95131 USA



Please scan the QR code to access additional product information:
SATB1 (Phospho Ser47) Rabbit pAb

For Research Use Only. Not for Use in Diagnostic Procedures.

[Antibody](#) | [ELISA Kits](#) | [Protein](#) | [Reagents](#)