

## SAMHD1 (Phospho Thr592) Rabbit pAb

CatalogNo: YP1477 **Orthogonal Validated** 

### Key Features

#### Host Species

- Rabbit

#### Reactivity

- Human, Mouse, Rat

#### Applications

- WB

#### MW

- 72kD (Observed)

#### Isotype

- IgG

### Storage

**Storage\*** -15°C to -25°C/1 year (Do not lower than -25°C)

**Formulation** Liquid in PBS containing 50% glycerol, 0.5% BSA and 0.02% sodium azide.

### Recommended Dilution Ratios

WB 1:1000-2000

### Basic Information

**Clonality** Polyclonal

### Immunogen Information

**Immunogen** Synthesized phospho peptide around human SAMHD1 (Thr592)

**Specificity** This antibody detects endogenous levels of Human Mouse Rat SAMHD1 (phospho-Thr592)

### Target Information

**Gene name** SAMHD1 MOP5

**Protein Name** SAMHD1 (Thr592)

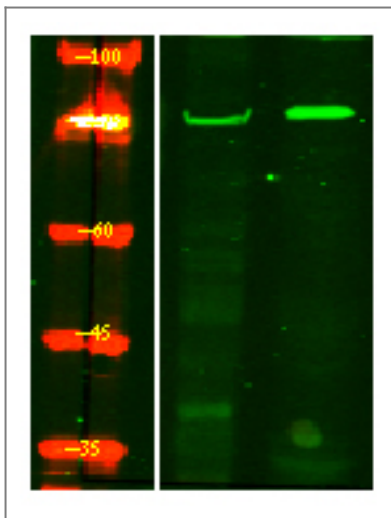
Organism	Gene ID	UniProt ID
Human	<a href="#">25939;</a>	<a href="#">Q9Y3Z3;</a>
Mouse	<a href="#">56045;</a>	<a href="#">Q60710;</a>

**Cellular Localization** Nucleus . Chromosome . Localizes to sites of DNA double-strand breaks in response to DNA damage. .

**Tissue specificity** Expressed in heart , skeletal muscle , spleen , liver , small intestine , placenta , lung and peripheral blood leukocytes (PubMed:11064105) . No expression is seen in brain and thymus (PubMed:11064105) .

**Function** Function:May play a role in mediating proinflammatory responses to TNF-alpha signaling. ,induction:By interferon gamma. Up-regulated in TNF-alpha treated lung fibroblasts. ,similarity:Contains 1 HD domain. ,similarity:Contains 1 SAM (sterile alpha motif) domain. ,tissue specificity:Expressed in heart , skeletal muscle , spleen , liver , small intestine , placenta , lung and peripheral blood leukocytes. No expression is seen in brain and thymus.

## Validation Data



Western Blot analysis of HeLa treated or untreated by LPS lysis, using primary antibody at 1:1000 dilution. Secondary antibody (catalog#:RS23920) was diluted at 1:10000

## Contact information

Orders: [order.cn@immunoway.com](mailto:order.cn@immunoway.com)  
Support: [support.cn@immunoway.com](mailto:support.cn@immunoway.com)  
Telephone: 400-8787-807(China)  
Website: <http://www.immunoway.com.cn>  
Address: 2200 Ringwood Ave San Jose, CA 95131 USA



Please scan the QR code to access additional product information:  
**SAMHD1 (Phospho Thr592) Rabbit pAb**

