

## ROS1 (Phospho Tyr2274) Rabbit pAb

CatalogNo: YP1469

### Key Features

#### Host Species

- Rabbit

#### Reactivity

- Human, Mouse, Rat

#### Applications

- WB, IF

#### MW

- 258kD (Observed)

#### Isotype

- IgG

### Storage

**Storage\*** -15°C to -25°C/1 year (Do not lower than -25°C)

**Formulation** Liquid in PBS containing 50% glycerol, 0.5% BSA and 0.02% sodium azide.

### Recommended Dilution Ratios

**WB 1:1000-2000**

**IF 1:50-200**

### Basic Information

**Clonality** Polyclonal

### Immunogen Information

**Immunogen** Synthesized phospho peptide around human ROS1 (Tyr2274)

**Specificity** This antibody detects endogenous levels of Human ROS1 (phospho-Tyr2274). The name of modified sites may be influenced by many factors, such as species (the modified site was not originally found in human samples) and the change of protein sequence (the previous protein sequence is incomplete, and the protein sequence may be prolonged with the development of protein sequencing technology). When naming, we will use the "numbers" in historical reference to keep the sites consistent with the reports. The antibody binds to the following modification sequence (lowercase letters are modification sites): LNyMV

## Target Information

**Gene name** ROS1 MCF3 ROS

**Protein Name** ROS1 (Tyr2274)

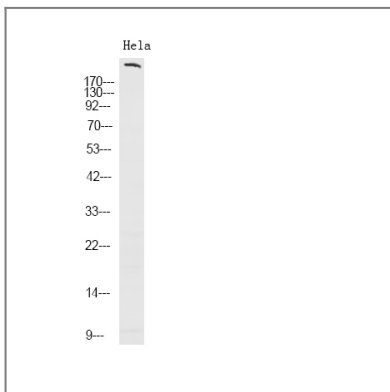
Organism	Gene ID	UniProt ID
Human	<a href="#">6098;</a>	<a href="#">P08922;</a>
Mouse	<a href="#">19886;</a>	<a href="#">Q78DX7;</a>
Rat	<a href="#">25346;</a>	<a href="#">Q63132;</a>

**Cellular Localization** Cell membrane ; Single-pass type I membrane protein .

**Tissue specificity** Expressed in brain. Expression is increased in primary gliomas.

**Function** Catalytic activity:ATP + a [protein]-L-tyrosine = ADP + a [protein]-L-tyrosine phosphate.,Disease:A chromosomal aberration involving ROS1 is found in glioblastoma multiform (GBM). An homozygous deletion in chromosome 6q21 results in expression of a GOPC-ROS1 chimeric protein which has a constitutive receptor tyrosine kinase activity.,Function:This is probably a cell growth or differentiation factor receptor with a tyrosine-protein kinase activity.,similarity:Belongs to the protein kinase superfamily. Tyr protein kinase family. Insulin receptor subfamily.,similarity:Contains 1 protein kinase domain.,similarity:Contains 9 fibronectin type-III domains.,

## Validation Data



Western Blot analysis of HeLa using primary antibody at 1:1000 dilution 4°C, overnight. Secondary antibody(catalog#:RS23920) was diluted at 1:10000 25°C, 1.5hours

## Contact information

Orders: order.cn@immunoway.com  
Support: support.cn@immunoway.com  
Telephone: 400-8787-807(China)  
Website: <http://www.immunoway.com.cn>  
Address: 2200 Ringwood Ave San Jose, CA 95131 USA



Please scan the QR code  
to access additional  
product information:  
**ROS1 (Phospho  
Tyr2274) Rabbit  
pAb**

---

For Research Use Only. Not for Use in Diagnostic Procedures.

[Antibody](#) | [ELISA Kits](#) | [Protein](#) | [Reagents](#)