

## NR1D1 (Phospho Ser55/59) Rabbit pAb

CatalogNo: YP1465

### Key Features

#### Host Species

- Rabbit

#### Reactivity

- Human, Mouse, Rat

#### Applications

- WB, IHC

#### MW

- 67kD (Observed)

#### Isotype

- IgG

### Storage

**Storage\*** -15°C to -25°C/1 year (Do not lower than -25°C)

**Formulation** Liquid in PBS containing 50% glycerol, 0.5% BSA and 0.02% sodium azide.

### Recommended Dilution Ratios

WB 1:500-2000

IHC 1:50-300

### Basic Information

**Clonality** Polyclonal

### Immunogen Information

**Immunogen** Synthesized phospho peptide around human Rev-erb $\alpha$  (Ser55 and 59)

**Specificity** This antibody detects endogenous levels of Rev-erb $\alpha$  only when phosphorylated at Ser55 or 59, and dually phosphorylated at two sites.

### Target Information

**Gene name** NR1D1 EAR1 HREV THRAL

**Protein Name** Rev-erba (Ser55/59)

Organism	Gene ID	UniProt ID
Human	<a href="#">9572</a> ;	<a href="#">P20393</a> ;
Mouse	<a href="#">217166</a> ;	<a href="#">Q3UV55</a> ;
Rat	<a href="#">252917</a> ;	<a href="#">Q63503</a> ;

**Cellular Localization**

Nucleus . Cytoplasm . Cell projection, dendrite . Cell projection, dendritic spine . Localizes to the cytoplasm, dendrites and dendritic spine in the presence of OPHN1. Localizes predominantly to the nucleus at ZT8 whereas it is cytoplasmic at ZT20. Phosphorylation by CSNK1E enhances its cytoplasmic localization. .

**Tissue specificity**

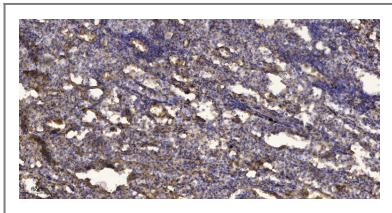
Widely expressed. Expressed at high levels in the liver, adipose tissue, skeletal muscle and brain. Also expressed in endothelial cells (ECs), vascular smooth muscle cells (VSMCs) and macrophages. Expression oscillates diurnally in the suprachiasmatic nucleus (SCN) of the hypothalamus as well as in peripheral tissues. Expression increases during the differentiation of pre-adipocytes into mature adipocytes. Expressed at high levels in some squamous carcinoma cell lines.

**Function**

Domain:Composed of three domains: a modulating N-terminal domain, a DNA-binding domain and a C-terminal steroid-binding domain.,Function:Functions as a constitutive transcriptional repressor. Possible receptor for triiodothyronine.,similarity:Belongs to the nuclear hormone receptor family. NR1 subfamily.,similarity:Contains 1 nuclear receptor DNA-binding domain.,subunit:Interacts with C1D.,tissue specificity:Expressed in all tissues and cell lines examined. Expressed at high levels in some squamous carcinoma cell lines.,

---

## Validation Data



Immunohistochemical analysis of paraffin-embedded human Squamous cell carcinoma of lung. 1, Antibody was diluted at 1:200(4° overnight). 2, Tris-EDTA,pH9.0 was used for antigen retrieval. 3,Secondary antibody was diluted at 1:200(room temperature, 45min).

## Contact information

Orders: [order.cn@immunoway.com](mailto:order.cn@immunoway.com)  
Support: [support.cn@immunoway.com](mailto:support.cn@immunoway.com)  
Telephone: 400-8787-807(China)  
Website: <http://www.immunoway.com.cn>  
Address: 2200 Ringwood Ave San Jose, CA 95131 USA



Please scan the QR code to access additional product information:  
**NR1D1 (Phospho Ser55/59) Rabbit pAb**

