

REPS1 (Phospho Ser709) Rabbit pAb

CatalogNo: YP1464

Key Features

Host Species

- Rabbit

Reactivity

- Human, Mouse, Rat

Applications

- WB, IHC

MW

- 80kD (Observed)

Isotype

- IgG

Storage

Storage* -15°C to -25°C/1 year (Do not lower than -25°C)

Formulation Liquid in PBS containing 50% glycerol, 0.5% BSA and 0.02% sodium azide.

Recommended Dilution Ratios

WB 1:500-2000

IHC 1:50-300

Basic Information

Clonality Polyclonal

Immunogen Information

Immunogen Synthesized phospho peptide around human REPS1 (Ser709)

Specificity This antibody detects endogenous levels of Human REPS1 (phospho-Ser709)

Target Information

Gene name REPS1

Protein Name RalBP1-associated Eps domain-containing protein 1

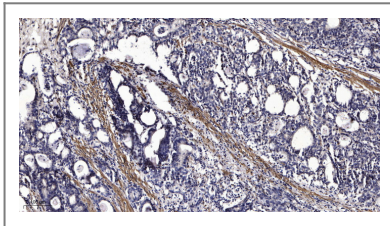
Organism	Gene ID	UniProt ID
Human	85021 ;	Q96D71 ;
Mouse	19707 ;	O54916 ;

Cellular Localization Membrane, clathrin-coated pit . Colocalize with ITSN1 at the plasma membrane in structures that are most probably clathrin-coated pits.

Tissue specificity Widely expressed with highest levels in heart and testis.

Function Function:May coordinate the cellular actions of activated EGF receptors and Ral-GTPases.,PTM:EGF stimulates phosphorylation on Tyr-residues.,similarity:Contains 1 EF-hand domain.,similarity:Contains 1 EH domain.,subunit:Homodimer (Potential). Interacts with RAB11FIP2. Interacts with RALBP1, CRK and GRB2. Binding to RALBP1 does not affect its Ral-binding activity. Forms a complex with the SH3 domains of CRK and GRB2 which may link it to an EGF-responsive tyrosine kinase.,

| Validation Data



Immunohistochemical analysis of paraffin-embedded human Gastric adenocarcinoma. 1, Antibody was diluted at 1:200(4° overnight). 2, Tris-EDTA,pH9.0 was used for antigen retrieval. 3,Secondary antibody was diluted at 1:200(room temperature, 45min).

| Contact information

Orders: order.cn@immunoway.com
Support: support.cn@immunoway.com
Telephone: 400-8787-807(China)
Website: <http://www.immunoway.com.cn>
Address: 2200 Ringwood Ave San Jose, CA 95131 USA



Please scan the QR code to access additional product information:
REPS1 (Phospho Ser709) Rabbit pAb

For Research Use Only. Not for Use in Diagnostic Procedures.

[Antibody](#) | [ELISA Kits](#) | [Protein](#) | [Reagents](#)