

RCC1 (Phospho Ser11) Rabbit pAb

CatalogNo: YP1463

Key Features

Host Species

- Rabbit

Reactivity

- Human,Mouse,Rat

Applications

- WB,IHC

MW

- 45kD (Observed)

Isotype

- IgG

Storage

Storage* -15°C to -25°C/1 year(Do not lower than -25°C)

Formulation Liquid in PBS containing 50% glycerol, 0.5% BSA and 0.02% sodium azide.

Recommended Dilution Ratios

WB 1:500-2000

IHC 1:50-300

Basic Information

Clonality Polyclonal

Immunogen Information

Immunogen Synthesized phospho peptide around human RCC1 (Ser11)

Specificity This antibody detects endogenous levels of Human RCC1 (phospho-Ser11). The name of modified sites may be influenced by many factors, such as species (the modified site was not originally found in human samples) and the change of protein sequence (the previous protein sequence is incomplete, and the protein sequence may be prolonged with the development of protein sequencing technology). When naming, we will use the "numbers" in historical reference to keep the sites consistent with the reports. The antibody binds to the following modification sequence (lowercase letters are modification sites):RRsPP

Target Information

Gene name RCC1 CHC1

Protein Name RCC1 (Ser11)

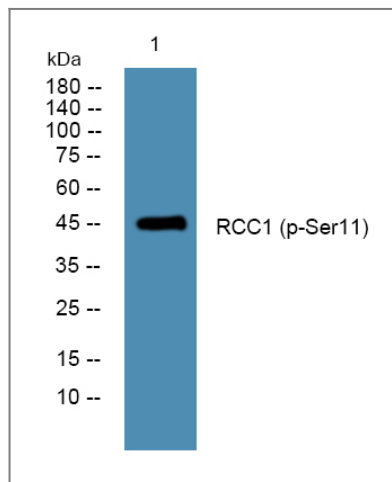
Organism	Gene ID	UniProt ID
Human	1104 ;	P18754 ;
Mouse	100088 ;	Q8VE37 ;

Cellular Localization Nucleus . Chromosome . Cytoplasm . Predominantly nuclear in interphase cells (PubMed:12194828). Binds to mitotic chromosomes (PubMed:12194828, PubMed:17435751, PubMed:20668449). .

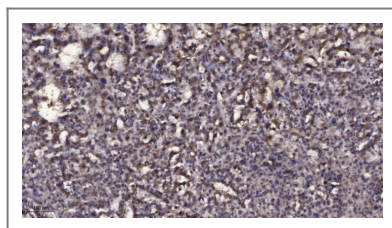
Tissue specificity Brain,Breast,Epithelium,Eye,Muscle,Testis,

Function Disease:Patients with Raynaud disease produce antibodies that bind to RCC1.,Function:Promotes the exchange of Ran-bound GDP by GTP. Involved in the regulation of onset of chromosome condensation in the S phase. Binds to the chromatin. RCC1/Ran complex (together with other proteins) acts as a component of a signal transmission pathway that detects unreplicated DNA.,similarity:Contains 7 RCC1 repeats.,subcellular location:Becomes dispersed throughout the cytoplasm during mitosis.,

Validation Data



Western blot analysis of lysates from Jurkat cells, primary antibody was diluted at 1:1000, 4° over night



Immunohistochemical analysis of paraffin-embedded human liver cancer. 1, Antibody was diluted at 1:200(4° overnight). 2, Tris-EDTA,pH9.0 was used for antigen retrieval. 3,Secondary antibody was diluted at 1:200(room temperature, 45min).

| Contact information

Orders: order.cn@immunoway.com
Support: support.cn@immunoway.com
Telephone: 400-8787-807(China)
Website: <http://www.immunoway.com.cn>
Address: 2200 Ringwood Ave San Jose, CA 95131 USA



Please scan the QR code to access additional product information:
RCC1 (Phospho Ser11) Rabbit pAb

For Research Use Only. Not for Use in Diagnostic Procedures.

[Antibody](#) | [ELISA Kits](#) | [Protein](#) | [Reagents](#)