

RanBP3 (Phospho Ser58) Rabbit pAb

CatalogNo: YP1460

Key Features

Host Species

- Rabbit

Reactivity

- Human, Mouse, Rat

Applications

- WB, ELISA, IHC

MW

- 60kD (Observed)

Isotype

- IgG

Storage

Storage* -15°C to -25°C/1 year (Do not lower than -25°C)

Formulation Liquid in PBS containing 50% glycerol, 0.5% BSA and 0.02% sodium azide.

Recommended Dilution Ratios

WB 1:500-2000

IHC 1:50-300

ELISA 1:2000-20000

Basic Information

Clonality Polyclonal

Immunogen Information

Immunogen Synthesized phospho peptide around human RanBP3 (Ser58)

Specificity This antibody detects endogenous levels of Human RanBP3 (phospho-Ser58)

Target Information

Gene name RANBP3

Protein Name Ran-binding protein 3

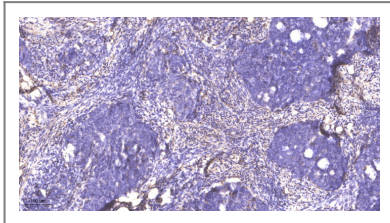
Organism	Gene ID	UniProt ID
Human	8498;	Q9H6Z4;
Mouse	71810;	Q9CT10;

Cellular Localization Cytoplasm . Nucleus .

Tissue specificity Widely expressed with high levels in testis and heart.

Function Function:Acts as a cofactor for XPO1/CRM1-mediated nuclear export, perhaps as export complex scaffolding protein. Bound to XPO1/CRM1, stabilizes the XPO1/CRM1-cargo interaction. In the absence of Ran-bound GTP prevents binding of XPO1/CRM1 to the nuclear pore complex. Binds to CHC1/RCC1 and increases the guanine nucleotide exchange activity of CHC1/RCC1. Recruits XPO1/CRM1 to CHC1/RCC1 in a Ran-dependent manner.,PTM:Phosphorylated upon DNA damage, probably by ATM or ATR.,similarity:Contains 1 RanBD1 domain.,subunit:Interacts with CHC1 in a Ran-stimulated manner. Interacts with XPO1.,tissue specificity:Widely expressed with high levels in testis and heart.,

Validation Data



Immunohistochemical analysis of paraffin-embedded human cervical carcinoma. 1, Antibody was diluted at 1:200(4° overnight). 2, Tris-EDTA,pH9.0 was used for antigen retrieval. 3,Secondary antibody was diluted at 1:200(room temperature, 45min).

Contact information

Orders: order.cn@immunoway.com
Support: support.cn@immunoway.com
Telephone: 400-8787-807(China)
Website: <http://www.immunoway.com.cn>
Address: 2200 Ringwood Ave San Jose, CA 95131 USA



Please scan the QR code to access additional product information:
RanBP3 (Phospho Ser58) Rabbit pAb