

## Rad18 (Phospho Ser403) Rabbit pAb

CatalogNo: YP1458

### Key Features

#### Host Species

- Rabbit

#### Reactivity

- Human, Mouse, Rat

#### Applications

- WB, ELISA, IHC

#### MW

- 56kD (Observed)

#### Isotype

- IgG

### Storage

**Storage\*** -15°C to -25°C/1 year (Do not lower than -25°C)

**Formulation** Liquid in PBS containing 50% glycerol, 0.5% BSA and 0.02% sodium azide.

### Recommended Dilution Ratios

**WB 1:500-2000**

**IHC 1:50-300**

**ELISA 1:2000-20000**

### Basic Information

**Clonality** Polyclonal

### Immunogen Information

**Immunogen** Synthesized phospho peptide around human Rad18 (Ser403)

**Specificity** This antibody detects endogenous levels of Human Rad18 (phospho-Ser403)

### Target Information

**Gene name** RAD18 RNF73

**Protein Name** E3 ubiquitin-protein ligase RAD18

Organism	Gene ID	UniProt ID
Human	<a href="#">56852;</a>	<a href="#">Q9NS91;</a>
Mouse	<a href="#">58186;</a>	<a href="#">Q9QXK2;</a>

**Cellular Localization**

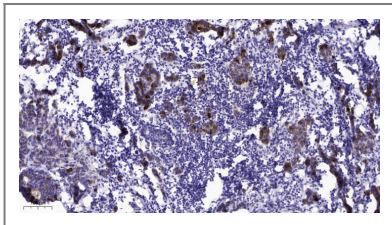
Nucleus . Cytoplasm, cytoskeleton, microtubule organizing center, centrosome . Associates with chromatin (PubMed:25931565). Colocalizes with SLF1 in the nucleus and to centrosomes (PubMed:15632077). Relocalizes with SLF1 to nuclear foci in response to DNA damage (PubMed:22036607). Accumulates with the SLF1-SLF2 and SMC5-SMC6 complexes at replication-coupled DNA interstrand repair and DNA double-strand breaks (DSBs) sites on chromatin in a ubiquitin-dependent manner (PubMed:25931565). .

**Tissue specificity** Epithelium,Liver,Placenta,

**Function**

Function:E3 ubiquitin-protein ligase involved in postreplication repair of UV-damaged DNA. Postreplication repair functions in gap-filling of a daughter strand on replication of damaged DNA. Associates to the E2 ubiquitin conjugating enzyme UBE2B to form the UBE2B-RAD18 ubiquitin ligase complex involved in mono-ubiquitination of DNA-associated PCNA on 'Lys-164'. Has ssDNA binding activity.,pathway:Protein modification; protein ubiquitination.,similarity:Belongs to the RAD18 family.,similarity:Contains 1 RING-type zinc finger.,similarity:Contains 1 SAP domain.,subunit:Interacts with UBE2A and UBE2B. Interacts with SHPRH.,

## Validation Data



Immunohistochemical analysis of paraffin-embedded human Breast cancer. 1, Antibody was diluted at 1:200(4° overnight). 2, Tris-EDTA,pH9.0 was used for antigen retrieval. 3,Secondary antibody was diluted at 1:200(room temperature, 45min).

## Contact information

Orders: [order.cn@immunoway.com](mailto:order.cn@immunoway.com)  
Support: [support.cn@immunoway.com](mailto:support.cn@immunoway.com)  
Telephone: 400-8787-807(China)  
Website: <http://www.immunoway.com.cn>  
Address: 2200 Ringwood Ave San Jose, CA 95131 USA



Please scan the QR code to access additional product information:  
**Rad18 (Phospho Ser403) Rabbit pAb**