

PRK1 (Phospho Thr774)/PRK2 (Phospho Thr816) Rabbit pAb

CatalogNo: YP1451 **Orthogonal Validated** 

Key Features

Host Species

- Rabbit

Reactivity

- Human, Mouse, Rat

Applications

- WB, ELISA, IHC

MW

- 103kD (Observed)

Isotype

- IgG

Storage

Storage* -15°C to -25°C/1 year (Do not lower than -25°C)

Formulation Liquid in PBS containing 50% glycerol, 0.5% BSA and 0.02% sodium azide.

Recommended Dilution Ratios

WB 1:500-2000

IHC 1:50-300

ELISA 1:2000-20000

Basic Information

Clonality Polyclonal

Immunogen Information

Immunogen Synthesized phospho peptide around human PRK1 (Thr774) and PRK2 (Thr816)

Specificity

This antibody detects endogenous levels of Human Mouse Rat PRK1 (phospho-Thr774) or PRK2 (phospho-Thr816).The name of modified sites may be influenced by many factors, such as species (the modified site was not originally found in human samples) and the change of protein sequence (the previous protein sequence is incomplete, and the protein sequence may be prolonged with the development of protein sequencing technology). When naming, we will use the "numbers" in historical reference to keep the sites consistent with the reports. The antibody binds to the following modification sequence (lowercase letters are modification sites):RTStF

Target Information

Protein Name PRK1 (Thr774)/PRK2 (Thr816)

Organism	Gene ID	UniProt ID
Human	5585 ;	Q16512 ;
Mouse	320795 ;	P70268 ;
Rat	29355 ;	Q63433 ;

Cellular Localization

Cytoplasm . Nucleus . Endosome . Cell membrane ; Peripheral membrane protein . Cleavage furrow . Midbody . Associates with chromatin in a ligand-dependent manner. Localization to endosomes is mediated via its interaction with RHOB. Association to the cell membrane is dependent on Ser-377 phosphorylation. Accumulates during telophase at the cleavage furrow and finally concentrates around the midbody in cytokinesis. .

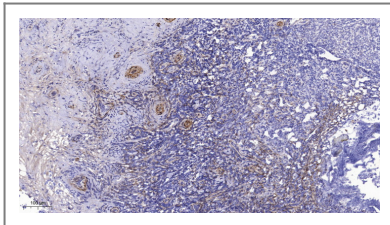
Tissue specificity

Found ubiquitously. Expressed in heart, brain, placenta, lung, skeletal muscle, kidney and pancreas. Expressed in numerous tumor cell lines, especially in breast tumor cells.

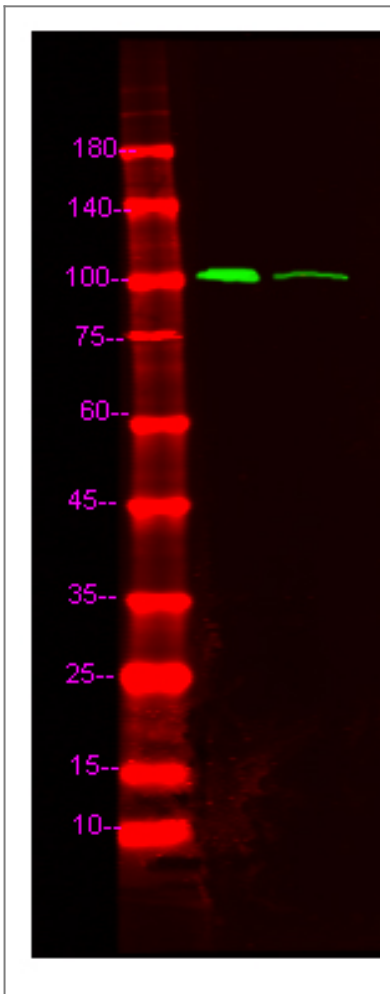
Function

Catalytic activity:ATP + a protein = ADP + a phosphoprotein.,Domain:The C1 domain does not bind the diacylglycerol (DAG).,enzyme regulation:Activated by lipids, particularly cardiolipin and to a lesser extent by other acidic phospholipids. Two specific sites, Thr-774 (activation loop of the kinase domain) and Ser-916 (turn motif), need to be phosphorylated for its full activation.,Function:Can phosphorylate ribosomal protein S6. Mediates GTPase Rho dependent intracellular signaling.,PTM:Activated by limited proteolysis with trypsin.,PTM:Autophosphorylated; preferably on serine.,similarity:Belongs to the protein kinase superfamily.,similarity:Belongs to the protein kinase superfamily. AGC Ser/Thr protein kinase family. PKC subfamily.,similarity:Contains 1 AGC-kinase C-terminal domain.,similarity:Contains 1 C2 domain.,similarity:Contains 1 protein kinase domain.,similarity:Contains 3 REM (Hr1) repeats.,subunit:Interacts with ZA20D3 (By similarity). Interacts with RhoA and Rac1.,tissue specificity:Found ubiquitously. Expressed in heart, brain, placenta, lung, skeletal muscle, kidney and pancreas.,

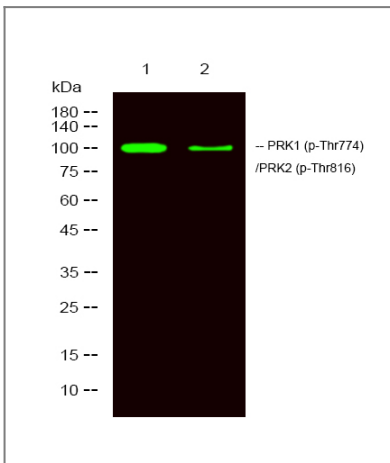
Validation Data



Immunohistochemical analysis of paraffin-embedded human tonsil. 1, Antibody was diluted at 1:200(4° overnight). 2, Tris-EDTA,pH9.0 was used for antigen retrieval. 3,Secondary antibody was diluted at 1:200(room temperature, 45min).



Western Blot analysis of HeLa treated or untreated by LPS lysis, using primary antibody at 1:1000 dilution. Secondary antibody(catalog#:RS23920) was diluted at 1:10000



Western Blot analysis of 1 NIH/3T3 treated with LPS, 2 NIH/3T3 ,using primary antibody at 1:1000 dilution. Secondary antibody(catalog#:RS23920) was diluted at 1:10000

Contact information

Orders: order.cn@immunoway.com
Support: support.cn@immunoway.com
Telephone: 400-8787-807(China)
Website: <http://www.immunoway.com.cn>
Address: 2200 Ringwood Ave San Jose, CA 95131 USA



Please scan the QR code to access additional product information:
PRK1 (Phospho Thr774)/PRK2 (Phospho Thr816) Rabbit pAb

For Research Use Only. Not for Use in Diagnostic Procedures.

[Antibody](#) | [ELISA Kits](#) | [Protein](#) | [Reagents](#)