

## PLC $\gamma$ 2 (Phospho Tyr759) Rabbit pAb

CatalogNo: YP1446 **Orthogonal Validated** 

### Key Features

#### Host Species

- Rabbit

#### Reactivity

- Human, Mouse

#### Applications

- WB, IF, ELISA, IHC

#### MW

- 148kD (Observed)

#### Isotype

- IgG

### Storage

**Storage\*** -15°C to -25°C/1 year (Do not lower than -25°C)

**Formulation** Liquid in PBS containing 50% glycerol, 0.5% BSA and 0.02% sodium azide.

### Recommended Dilution Ratios

WB 1:500-2000

IF/ICC 1:50-200

ELISA 1:2000-20000

IHC 1:50-200

### Basic Information

**Clonality** Polyclonal

### Immunogen Information

**Immunogen** Synthesized phospho peptide around human PLC $\gamma$ 2 (Tyr759)

**Specificity** This antibody detects endogenous levels of Human Mouse PLC $\gamma$ 2 (phospho-Tyr759). The name of modified sites may be influenced by many factors, such as species (the modified site was not originally found in human samples) and the change of protein sequence (the previous protein sequence is incomplete, and the protein sequence may be prolonged with the development of protein sequencing technology). When naming, we will use the "numbers" in historical reference to keep the sites consistent with the reports. The antibody binds to the following modification sequence (lowercase letters are modification sites): RMyVD

## Target Information

**Gene name** PLCG2

**Protein Name** 1-phosphatidylinositol 4,5-bisphosphate phosphodiesterase gamma-2

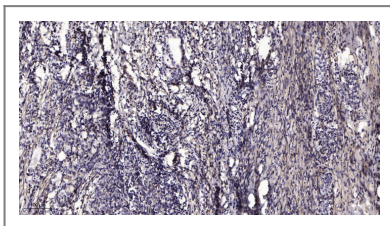
Organism	Gene ID	UniProt ID
Human	<a href="#">5336</a> ;	<a href="#">P16885</a> ;
Mouse	<a href="#">234779</a> ;	<a href="#">Q8CIH5</a> ;
Rat	<a href="#">29337</a> ;	<a href="#">P24135</a> ;

**Cellular Localization** intracellular,cytosol,plasma membrane,extracellular exosome,

**Tissue specificity** Lymph,Lymphoblast,Spleen,T-cell,

**Function** Catalytic activity:1-phosphatidyl-1D-myo-inositol 4,5-bisphosphate + H(2)O = 1D-myo-inositol 1,4,5-trisphosphate + diacylglycerol.,cofactor:Calcium.,Function:The production of the second messenger molecules diacylglycerol (DAG) and inositol 1,4,5-trisphosphate (IP3) is mediated by activated phosphatidylinositol-specific phospholipase C enzymes. It is a crucial enzyme in transmembrane signaling.,PTM:Phosphorylated on tyrosine residues; upon ligand-induced activation of a variety of growth factor receptors and immune system receptors. Increases phospholipase activity.,similarity:Contains 1 C2 domain.,similarity:Contains 1 PH domain.,similarity:Contains 1 PI-PLC X-box domain.,similarity:Contains 1 PI-PLC Y-box domain.,similarity:Contains 1 SH3 domain.,similarity:Contains 2 SH2 domains.,

## Validation Data



Immunohistochemical analysis of paraffin-embedded human Gastric adenocarcinoma. 1, Antibody was diluted at 1:200(4° overnight). 2, Tris-EDTA,pH9.0 was used for antigen retrieval. 3,Secondary antibody was diluted at 1:200(room temperature, 45min).

## Contact information

Orders: [order.cn@immunoway.com](mailto:order.cn@immunoway.com)  
Support: [support.cn@immunoway.com](mailto:support.cn@immunoway.com)  
Telephone: 400-8787-807(China)  
Website: <http://www.immunoway.com.cn>  
Address: 2200 Ringwood Ave San Jose, CA 95131 USA



Please scan the QR code to access additional product information:  
**PLC  $\gamma$ 2 (Phospho Tyr759) Rabbit pAb**

