

NEDD4L (Phospho Ser342) Rabbit pAb

CatalogNo: YP1416 **Orthogonal Validated** 

Key Features

Host Species

- Rabbit

Reactivity

- Human, Mouse, Rat

Applications

- WB

MW

- 110-120kD (Observed)

Isotype

- IgG

Storage

Storage* -15°C to -25°C/1 year (Do not lower than -25°C)

Formulation Liquid in PBS containing 50% glycerol, 0.5% BSA and 0.02% sodium azide.

Recommended Dilution Ratios

WB 1:1000-2000

Basic Information

Clonality Polyclonal

Immunogen Information

Immunogen Synthesized phospho peptide around human NEDD4L (Ser342)

Specificity This antibody detects endogenous levels of Human Mouse Rat NEDD4L (phospho-Ser342)

Target Information

Gene name NEDD4L KIAA0439 NEDL3

Protein Name NEDD4L (Ser342)

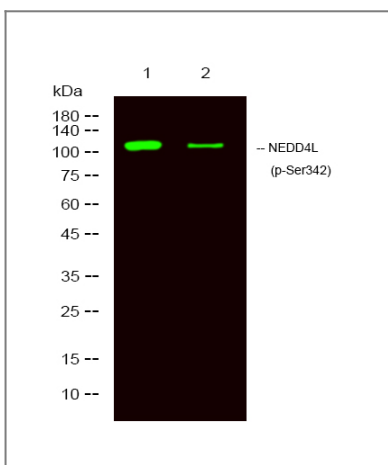
Organism	Gene ID	UniProt ID
Human	23327 ;	Q96PU5 ;
Mouse		Q8CFI0 ;

Cellular Localization Cytoplasm . Golgi apparatus . Endosome, multivesicular body . May be recruited to exosomes by NDFIP1.

Tissue specificity Ubiquitously expressed, with highest levels in prostate, pancreas, and kidney (PubMed:14615060, PubMed:15496141, PubMed:19664597). Expressed in melanocytes (PubMed:23999003).

Function Function:E3 ubiquitin-protein ligase which accepts ubiquitin from an E2 ubiquitin-conjugating enzyme in the form of a thioester and then directly transfers the ubiquitin to targeted substrates. Inhibits TGF-beta signaling by triggering SMAD2 and TGFR1 ubiquitination and proteasome-dependent degradation. Promotes ubiquitination and internalization of various plasma membrane channels such as ENaC, Nav1.2, Nav1.3, Nav1.5, Nav1.7, Nav1.8, Kv1.3, EAAT1 or CLC5. Promotes ubiquitination and degradation of SGK.,induction:By androgens in prostate, and by albumin in kidney.,pathway:Protein modification; protein ubiquitination.,PTM:Phosphorylated by SGK or PKA; which impairs interaction with SCNN. Interaction with YWHAH inhibits dephosphorylation.,similarity:Contains 1 C2 domain.,similarity:Contains 1 HECT (E6AP-type E3 ubiquitin-protein ligase) domain.,similarity:Contains 4 WW domains.,subunit:Interacts with NDFIP2 and UBE2E3 (By similarity). Interacts via its WW domains with SCNN1A, SCNN1B, SCNN1G, SCN1A, SCN2A, SCN3A, SCN5A, SCN8A, SCN9A, SCN10A and CLCN5. Interacts with SMAD2, SMAD3, SMAD6 and SMAD7. The phosphorylated form interacts with 14-3-3 proteins. Interacts with Epstein-Barr virus LMP2A. Interacts with NDFIP1 in vitro.,tissue specificity:Ubiquitously expressed, with highest levels in prostate, pancreas and kidney.,

Validation Data



Western Blot analysis of 1 HeLa treated with LPS, 2 HeLa, using primary antibody at 1:1000 dilution. Secondary antibody (catalog#:RS23920) was diluted at 1:10000

Contact information

Orders: order.cn@immunoway.com
Support: support.cn@immunoway.com
Telephone: 400-8787-807(China)
Website: <http://www.immunoway.com.cn>
Address: 2200 Ringwood Ave San Jose, CA 95131 USA



Please scan the QR code
to access additional
product information:
**NEDD4L (Phospho
Ser342) Rabbit pAb**

For Research Use Only. Not for Use in Diagnostic Procedures.

[Antibody](#) | [ELISA Kits](#) | [Protein](#) | [Reagents](#)