

MYPT1 (Phospho Ser668) Rabbit pAb

CatalogNo: YP1413

Key Features

Host Species

- Rabbit

Reactivity

- Human, Mouse, Rat

Applications

- WB, ELISA, IHC

MW

- 130kD (Observed)

Isotype

- IgG

Storage

Storage* -15°C to -25°C/1 year (Do not lower than -25°C)

Formulation Liquid in PBS containing 50% glycerol, 0.5% BSA and 0.02% sodium azide.

Recommended Dilution Ratios

WB 1:500-2000

IHC 1:50-300

ELISA 1:2000-20000

Basic Information

Clonality Polyclonal

Immunogen Information

Immunogen Synthesized phospho peptide around human MYPT1 (Ser668)

Specificity This antibody detects endogenous levels of Human MYPT1 (phospho-Ser668)

Target Information

Gene name PPP1R12A MBS MYPT1

Protein Name MYPT1 (Ser668)

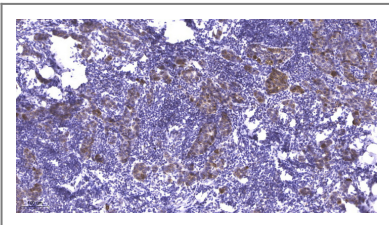
Organism	Gene ID	UniProt ID
Human	4659 ;	O14974 ;
Mouse	17931 ;	Q9DBR7 ;
Rat	116670 ;	Q10728 ;

Cellular Localization Cytoplasm . Cytoplasm, cytoskeleton, stress fiber . Also along actomyosin filaments. .

Tissue specificity Expressed in striated muscles, specifically in type 2a fibers (at protein level).

Function Function:Regulates myosin phosphatase activity.,PTM:Phosphorylated by CIT (Rho-associated kinase) (By similarity). Phosphorylated cooperatively by ROCK1 and CDC42BP on Thr-696. Phosphorylated on upon DNA damage, probably by ATM or ATR.,sequence Caution:Contaminating sequence. Potential poly-A sequence.,similarity:Contains 6 ANK repeats.,subcellular location:Along actomyosin filaments and stress fibers.,subunit:PP1 comprises a catalytic subunit, PPP1CA, PPP1CB or PPP1CC, and one or several targeting or regulatory subunits. PPP1R12A mediates binding to myosin. Interacts with ARHA and CIT (By similarity). Binds PPP1R12B, ROCK1 and IL16.,

Validation Data



Immunohistochemical analysis of paraffin-embedded human Breast cancer. 1, Antibody was diluted at 1:200(4° overnight). 2, Tris-EDTA,pH9.0 was used for antigen retrieval. 3,Secondary antibody was diluted at 1:200(room temperature, 45min).

Contact information

Orders: order.cn@immunoway.com
Support: support.cn@immunoway.com
Telephone: 400-8787-807(China)
Website: <http://www.immunoway.com.cn>
Address: 2200 Ringwood Ave San Jose, CA 95131 USA



Please scan the QR code to access additional product information:
MYPT1 (Phospho Ser668) Rabbit pAb