

## MERIT40 (Phospho Ser29) Rabbit pAb

CatalogNo: YP1401

### Key Features

#### Host Species

- Rabbit

#### Reactivity

- Human, Mouse, Rat

#### Applications

- WB, IHC

#### MW

- 36kD (Observed)

#### Isotype

- IgG

### Storage

**Storage\*** -15°C to -25°C/1 year (Do not lower than -25°C)

**Formulation** Liquid in PBS containing 50% glycerol, 0.5% BSA and 0.02% sodium azide.

### Recommended Dilution Ratios

WB 1:500-2000

IHC 1:50-300

### Basic Information

**Clonality** Polyclonal

### Immunogen Information

**Immunogen** Synthesized phospho peptide around human MERIT40 (Ser29)

**Specificity** This antibody detects endogenous levels of Human MERIT40 (phospho-Ser29)

### Target Information

**Gene name** BABAM1 C19orf62 MERIT40 NBA1 HSPC142

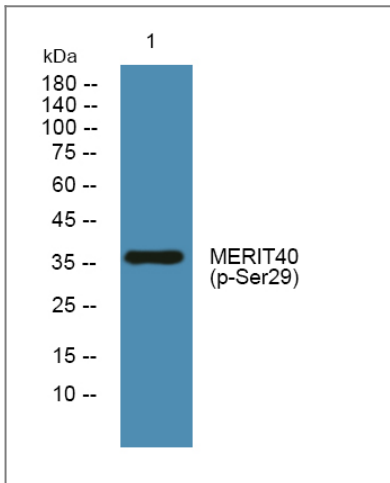
**Protein Name** BRISC and BRCA1-A complex member 1

Organism	Gene ID	UniProt ID
Human	<a href="#">29086</a> ;	<a href="#">Q9NWX8</a> ;
Mouse	<a href="#">68251</a> ;	<a href="#">Q3UI43</a> ;
Rat	<a href="#">290631</a> ;	<a href="#">Q5XIJ6</a> ;

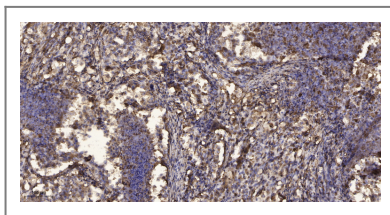
**Cellular Localization**

Cytoplasm . Nucleus . Localizes at sites of DNA damage at double-strand breaks (DSBs) . .

## Validation Data



Western blot analysis of lysates from SH-SY5Y cells, primary antibody was diluted at 1:1000, 4° over night



Immunohistochemical analysis of paraffin-embedded human Squamous cell carcinoma of lung. 1, Antibody was diluted at 1:200(4° overnight). 2, Tris-EDTA, pH9.0 was used for antigen retrieval. 3, Secondary antibody was diluted at 1:200(room temperature, 45min).

## Contact information

Orders: [order.cn@immunoway.com](mailto:order.cn@immunoway.com)  
Support: [support.cn@immunoway.com](mailto:support.cn@immunoway.com)  
Telephone: 400-8787-807(China)  
Website: <http://www.immunoway.com.cn>  
Address: 2200 Ringwood Ave San Jose, CA 95131 USA



Please scan the QR code to access additional product information:  
**MERIT40 (Phospho Ser29) Rabbit pAb**

