

MCM3 (Phospho Ser112) Rabbit pAb

CatalogNo: YP1398

Key Features

Host Species

- Rabbit

Reactivity

- Human, Mouse, Rat

Applications

- WB, ELISA, IHC

MW

- 89kD (Observed)

Isotype

- IgG

Storage

Storage* -15°C to -25°C/1 year (Do not lower than -25°C)

Formulation Liquid in PBS containing 50% glycerol, 0.5% BSA and 0.02% sodium azide.

Recommended Dilution Ratios

WB 1:500-2000

IHC 1:50-300

ELISA 1:2000-20000

Basic Information

Clonality Polyclonal

Immunogen Information

Immunogen Synthesized phospho peptide around human MCM3 (Ser112)

Specificity This antibody detects endogenous levels of Human MCM3 (phospho-Ser112)

Target Information

Gene name MCM3

Protein Name MCM3 (Ser112)

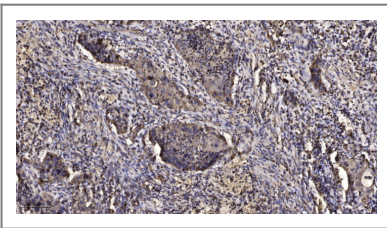
Organism	Gene ID	UniProt ID
Human	4172;	P25205;
Mouse	17215;	P25206;

Cellular Localization Nucleus . Chromosome . Associated with chromatin before the formation of nuclei and detaches from it as DNA replication progresses. .

Tissue specificity Cervix,Coronary artery,Epithelium,Lymph,Osteosarcoma,Pancre

Function Function:Acts as a factor that allows the DNA to undergo a single round of replication per cell cycle. Required for DNA replication and cell proliferation.,miscellaneous:Associated with the replication-specific DNA polymerase alpha.,PTM:Phosphorylated upon DNA damage, probably by ATM or ATR.,similarity:Belongs to the MCM family.,similarity:Contains 1 MCM domain.,

| Validation Data



Immunohistochemical analysis of paraffin-embedded human Squamous cell carcinoma of lung. 1, Antibody was diluted at 1:200(4° overnight). 2, Tris-EDTA,pH9.0 was used for antigen retrieval. 3,Secondary antibody was diluted at 1:200(room temperature, 45min).

| Contact information

Orders: order.cn@immunoway.com
Support: support.cn@immunoway.com
Telephone: 400-8787-807(China)
Website: <http://www.immunoway.com.cn>
Address: 2200 Ringwood Ave San Jose, CA 95131 USA



Please scan the QR code to access additional product information:
MCM3 (Phospho Ser112) Rabbit pAb

For Research Use Only. Not for Use in Diagnostic Procedures.

[Antibody](#) | [ELISA Kits](#) | [Protein](#) | [Reagents](#)