

MCM2 (Phospho Ser139) Rabbit pAb

CatalogNo: YP1397 **Orthogonal Validated** 

Key Features

Host Species

- Rabbit

Reactivity

- Human, Mouse, Rat

Applications

- WB, IHC

MW

- 120kD (Observed)

Isotype

- IgG

Storage

Storage* -15°C to -25°C/1 year (Do not lower than -25°C)

Formulation Liquid in PBS containing 50% glycerol, 0.5% BSA and 0.02% sodium azide.

Recommended Dilution Ratios

WB 1:500-2000

IHC 1:50-300

Basic Information

Clonality Polyclonal

Immunogen Information

Immunogen Synthesized phospho peptide around human MCM2 (Ser139)

Specificity This antibody detects endogenous levels of Human Mouse Rat MCM2 (phospho-Ser139). The name of modified sites may be influenced by many factors, such as species (the modified site was not originally found in human samples) and the change of protein sequence (the previous protein sequence is incomplete, and the protein sequence may be prolonged with the development of protein sequencing technology). When naming, we will use the "numbers" in historical reference to keep the sites consistent with the reports. The antibody binds to the following modification sequence (lowercase letters are modification sites): YDsDE

Target Information

Gene name MCM2 BM28 CCNL1 CDCL1 KIAA0030

Protein Name MCM2 (Ser139)

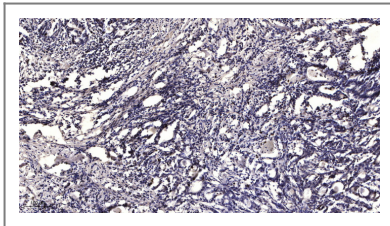
Organism	Gene ID	UniProt ID
Human	4171 ;	P49736 ;
Mouse	17216 ;	P97310 ;

Cellular Localization Nucleus . Chromosome . Associated with chromatin before the formation of nuclei and detaches from it as DNA replication progresses. .

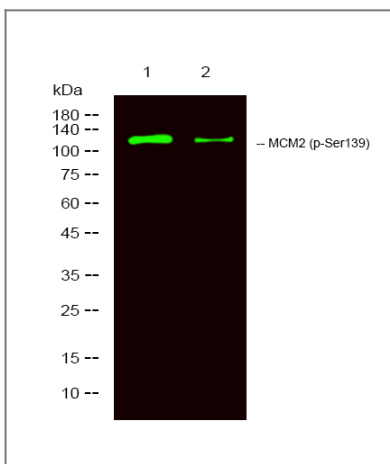
Tissue specificity Bone marrow ,Brain ,Cervix carcinoma ,Colon carcinoma ,Epithelia

Function Function:Acts as a factor that allows the DNA to undergo a single round of replication per cell cycle. Required for the entry in S phase and for cell division. ,PTM:Phosphorylated on Ser-108 by ATR in proliferating cells. Ser-108 proliferation is increased by genotoxic agents. Ser-40 is mediated by the CDC7-DBF4 and CDC7-DBF4B complexes , while Ser-53 phosphorylation is only mediated by the CDC7-DBF4 complex. ,sequence Caution:Translation N-terminally shortened. ,similarity:Belongs to the MCM family. ,similarity:Contains 1 MCM domain. ,subunit:Interacts with DBF4 (By similarity) . Interacts with MYST2. May interact with MCM10. ,

Validation Data



Immunohistochemical analysis of paraffin-embedded human Gastric adenocarcinoma. 1, Antibody was diluted at 1:200 (4°C overnight). 2, Tris-EDTA, pH 9.0 was used for antigen retrieval. 3, Secondary antibody was diluted at 1:200 (room temperature, 45min).



Western Blot analysis of 1 K562 treated with LPS, 2 K562, using primary antibody at 1:1000 dilution. Secondary antibody (catalog#:RS23920) was diluted at 1:10000

| Contact information

Orders: order.cn@immunoway.com
Support: support.cn@immunoway.com
Telephone: 400-8787-807(China)
Website: <http://www.immunoway.com.cn>
Address: 2200 Ringwood Ave San Jose, CA 95131 USA



Please scan the QR code to access additional product information:
MCM2 (Phospho Ser139) Rabbit pAb

For Research Use Only. Not for Use in Diagnostic Procedures.

[Antibody](#) | [ELISA Kits](#) | [Protein](#) | [Reagents](#)